

CONNECTIVITY

DIRECT ACCESS TO
NEW DUKE HIGHWAY



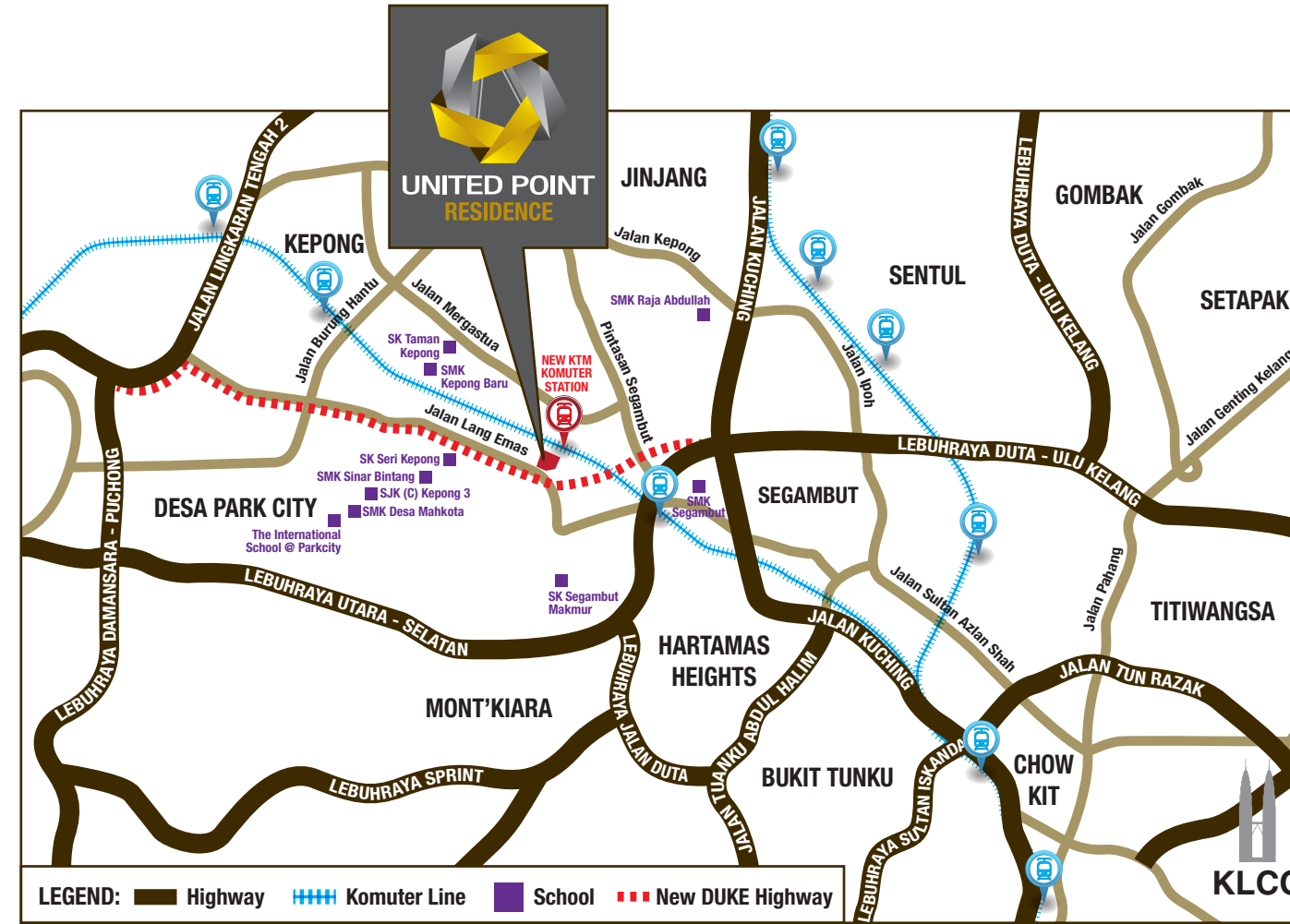
Strategically located at the south of Kepong, United Point is complemented by easy access via major expressways and public transportation infrastructure.

DIRECT LINK TO NEW KTM KOMUTER STATION

LEGEND
 KTM (TG. MALIM - PEL. KLANG)
 KTM (BATU CAVES - GEMAS)
 KELANA JAYA (PUTRA LINE)
 AMPANG / SRI PETALING (STAR LINE)
 KL MONORAIL
 KLIA EXPRESS / TRANSIT
 NEARBY STATION (WALKING DISTANCE)
 INTERCHANGE STATION



LOCATION MAP



Supermarket



Shopping Mall

CONVENIENT CITY LIVING

Feel right at home with the joys of a spacious abode and the convenience of having your everyday necessities right on your doorstep at United Point.



Cinema



Cafés/Restaurants

BUILDING SPECIFICATIONS

| | | | | | | | | | | |
|-----------------------------|---------------------------------------|--|--|---------|--------|--------|---------|---------|--------|---------|
| FOUNDATION | Reinforced concrete | SANITARY FITTINGS | Type A | Type A1 | Type B | Type C | Type C1 | Type C2 | Type D | Type D1 |
| STRUCTURE | Reinforced concrete | a. Pedestal water closet c/w bib tap | 2 | 1 | 2 | 2 | 2 | 2 | 3 | 3 |
| WALL | Masonry / Reinforced concrete wall | b. Wash basin c/w tap | 2 | 1 | 2 | 2 | 2 | 2 | 3 | 3 |
| ROOF | Reinforced concrete slab | c. Shower rose | 2 | 1 | 2 | 2 | 2 | 2 | 3 | 3 |
| WINDOWS | Aluminium framed window | d. Single bowl sink w/o drainer c/w tap | 1 | 1 | 1 | 1 | 1 | 1 | 1 | 1 |
| | | e. Washing machine tap | 1 | 1 | 1 | 1 | 1 | 1 | 1 | 1 |
| FLOOR FINISHES | | | | | | | | | | |
| a. Entrance | Homogeneous tiles | ELECTRICAL FITTINGS | | | | | | | | |
| b. Living, Dining & Kitchen | Homogeneous tiles | a. Lighting point | 14 | 10 | 14 | 14 | 14 | 14 | 17 | 18 |
| c. Bedrooms / Study Room | Laminated flooring | b. 13 Amp power point | 15 | 12 | 15 | 15 | 15 | 15 | 16 | 16 |
| d. Bathrooms | Homogeneous tiles / Porcelain tiles | c. 15 Amp power point | 1 | 1 | 1 | 1 | 1 | 1 | 1 | 1 |
| e. Balcony / Yard | Ceramic tiles | d. Ceiling fan point | 1 | 1 | 1 | 1 | 1 | 1 | 1 | 1 |
| WALL FINISHES | | e. SMATV point | 2 | 2 | 2 | 2 | 2 | 2 | 2 | 2 |
| a. Exterior | Spray tile and paint | f. Fibre wall socket | 1 | 1 | 1 | 1 | 1 | 1 | 1 | 1 |
| b. Interior | Skim coat and paint | g. Door bell point | 1 | 1 | 1 | 1 | 1 | 1 | 1 | 1 |
| c. Bathrooms | Ceramic tiles (1500mm minimum height) | h. Air-cond point c/w full piping system | 4 | 2 | 4 | 4 | 4 | 4 | 5 | 5 |
| d. Kitchen | Skim coat and paint | i. Hot water heater | - 1 no. of storage water heater - Bath 1: Hot water piping to shower and basin - Bath 2 & 3: Hot water piping to shower only | | | | | | | |
| CEILING | | j. Electrical distribution board | - 1 no. of single phase distribution board | | | | | | | |
| a. Generally | Skim coat and paint | | | | | | | | | |
| b. Bathrooms | Plaster Board and Paint | | | | | | | | | |
| DOORS | | | | | | | | | | |
| a. Main entrance | Timber door | | | | | | | | | |
| b. Others | Timber flush door | | | | | | | | | |
| c. Balcony | Aluminium framed sliding door | | | | | | | | | |
| d. Ironmongery | Quality lockset | | | | | | | | | |

Another Prestigious Development by:
UOA GROUP BUILDING EXCELLENCE
 DEVELOPER: IDP Industrial Development Sdn Bhd (120908-U)
 UOA PROPERTY GALLERY, THE VILLAGE
 Bangsar South City, No. 2, Jalan 1/112H
 Off Jalan Kerinchi, 59200 Kuala Lumpur, Malaysia
 T: +603 2282 9993 F: +603 2282 8590 www.uoa.com.my
 SINGAPORE PROPERTY GALLERY
 UOA (SINGAPORE) PTE LTD
 7, Tomasek Boulevard, #18-02, Suntec Tower 1, Singapore 038987
 T: +65 6333 9383 F: +65 6333 9332

Developer's Address: UOA Corporate Tower, Lobby A, Avenue 10, The Vertical, Bangsar South City, No. 8, Jalan Kerinchi, 59200 Kuala Lumpur, Malaysia | Developer's License No: 14325-1/04-2018/0284K | Validity Period: 28/04/2016-27/04/2018 | Sale & Advertising Permit No: 14325-1/04-2018/0284K | Validity Period: 28/04/2016-27/04/2018 | Project Type: Suite Apartments | Building Plan Approval Body: Dewan Bandaraya Kuala Lumpur | Building Plan Approval No: BP T1 OSC 2013 2462 | Total Suite Apartment Units: 2509 | Land Tenure: Freehold | Land Encumbrance: None | Proposed Completion Date: April 2021 | Minimum Price (Suite Apartments): RM 532,760 | Maximum Price (Suite Apartments): RM 943,160 | 5% Discount for Bumiputera
 All information and perspectives contained in this printed material are subject to change without prior notice and cannot form part of any offer or contract. All information contained herein is correct at the time of printing and neither the developer nor its agent(s) can be held responsible for any inaccuracy. All illustrations shown are artist's impressions only.

FREEHOLD SUITE APARTMENTS

AN ICONIC URBAN LIFESTYLE ADDRESS

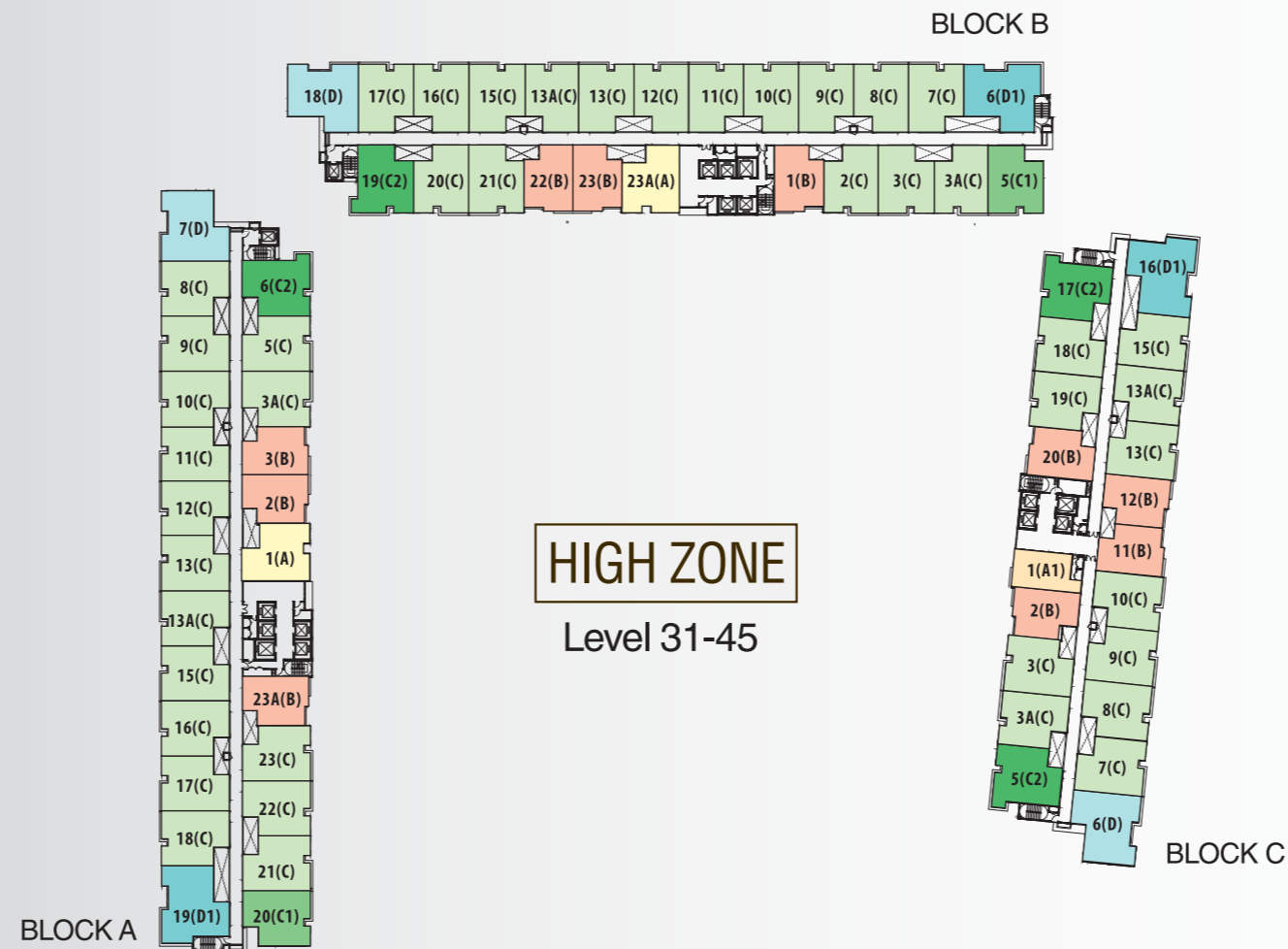
WITH DAILY CONVENIENCES RIGHT ON YOUR DOORSTEP

Shopping Mall | Supermarket | F&B Outlets | Cinema | KTM Station



Artist's impression

TYPICAL FLOOR PLAN



LEGEND

- TYPE A - 958 SQ FT
- TYPE B - 829 SQ FT
- TYPE C1 - 958 SQ FT
- TYPE D - 1,152 SQ FT
- TYPE A1 - 667 SQ FT
- TYPE C - 958 SQ FT
- TYPE C2 - 990 SQ FT
- TYPE D1 - 1,206 SQ FT

3 ACRES OF FACILITIES

United Point comprises 3 blocks of residential units with 3 acres of facilities that include a swimming pool, BBQ area, children's playground and gymnasium.

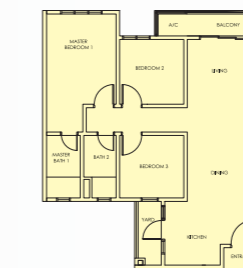
- 1 SWIMMING POOL
- 2 JACUZZI
- 3 POOL DECK
- 4 EVENT LAWN
- 5 AQUA GYMNASIUM
- 6 DINING PAVILION
- 7 LOUNGE AREA
- 8 PICNIC AREA
- 9 CHILDREN'S PLAYGROUND
- 10 WADING POOL
- 11 LEISURE POOL
- 12 FUNCTION ROOM
- 13 BBQ AREA
- 14 GYMNASIUM
- 15 MULTI-PURPOSE HALL



FLOOR PLANS

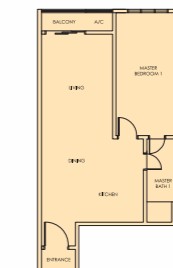
TYPE A

958 SQ FT
3 BEDROOMS



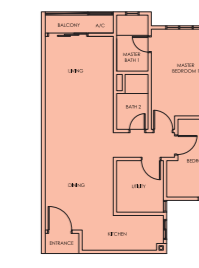
TYPE A1

667 SQ FT
1 BEDROOM



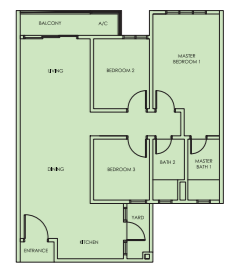
TYPE B

829 SQ FT
2+1 BEDROOMS



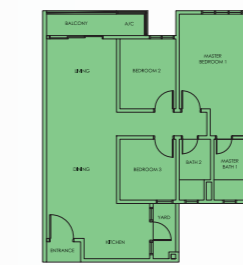
TYPE C

958 SQ FT
3 BEDROOMS



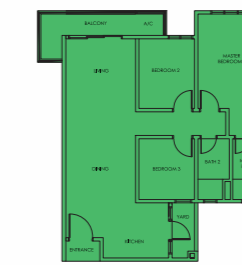
TYPE C1

958 SQ FT
3 BEDROOMS



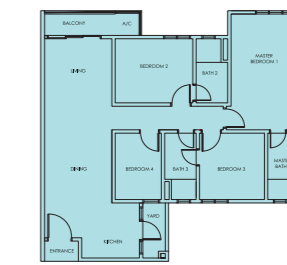
TYPE C2

990 SQ FT
3 BEDROOMS



TYPE D

1,152 SQ FT
4 BEDROOMS



TYPE D1

1,206 SQ FT
4 BEDROOMS

