



REFLECTION

RESIDENCES
Mutiara Damansara

Let your imagination and
personal touch compose the artful
arrangement on the canvas you call home.

THE TIMELESS ALLURE OF
PERFECTION

Immerse in a brilliant vision to ignite your creative expressions. Manifesting the character of its distinguished residents, Reflection Residences is a home that truly inspires.



A REFLECTION of polish lifestyle

Whether you want to lie by the Infinity Pool and soak up the sun, or just settle down and unwind with friends in the Sky Lounge before quenching your thirst for retail therapy or tea in one of the many trendy cafes available in its locality, Reflection Residences is the home that offers you this and more.

Situated in the buzzing district of shopping and entertainment of Mutiara Damansara, Reflection Residences caters to a modish lifestyle readily available to you in and around its vicinity.





AN EXQUISITE COMPOSITION OF ELEMENTS

The tallest residential structure in Mutiara Damansara, Reflection Residences features stunning and dynamic contemporary architecture and façade with transparent glass walls. This artful conception enhances natural illumination in the daylight and forms striking reflective art at night. Calming water features and a grand lobby with high-ceiling provides for a touch of welcoming grandeur as you arrive at this truly chic home.



AN EXTENSION OF YOUR **STYLE**



Create and style each space in your home to your heart's delight. Providing for eloquent living areas, the units provide for freedom of space planning and lets you compose your expression of art and creativity on the personal canvas you call home.



MAJESTIC FOYER



A world of grandeur and elegance welcomes your arrival. The towering hall will elegantly enchant you and your guests, every time.

PAVILION POOL



SKY LOUNGE



Chill at the Sky Lounge. Indulge in pleasant conversations with friends or just enjoy relaxing moments while basking in the beautiful night view of Mutiara Damansara's skyline. A personal retreat just above your home.

A COVETED ADDRESS FOR URBANITES



Poised in the heart of Mutiara Damansara, Reflection Residences is surrounded by established neighbourhoods of TTDI, Kota Damansara, Damansara Perdana and Kota Damansara. A strategically located home, it is a short distance from the thriving Mutiara Damansara commercial area that offers everything from malls to al fresco cafes. Some of the shopping and lifestyle spots include:

- 1 Utama Shopping Centre
- The Curve Shopping Mall
- Ikano Power Centre (IPC Shopping Centre)
- IKEA
- Cineleisure Damansara

Also providing for excellent amenities and public facilities for your conveniences including:

Supermarkets and Hypermarkets

- Tesco Mutiara Damansara Hypermarket
- Giant Mutiara Damansara Hypermarket

Parks and Recreational Facilities

- TTDI Park
- Central Park Bandar Utama
- Mutiara Damansara Recreational Park

Medical Facilities

- Damansara Specialist Centre
- Tropicana Medical Centre

Educational Facilities

- Garden International School
- British International School
- Public Schools
- SEGi University College
- Sekolah Menengah Kebangsaan Taman Tun Dr. Ismail.

Golf & Country Clubs and Hotels

- Kuala Lumpur Golf & Country Club (KLGCC)
- Tropicana Golf and Country Resort
- The Club
- Royal Bintang Hotel
- One World Hotel



Damansara Perdana

Kota Damansara

REFLECTION RESIDENCES
Mutiara Damansara

Cathay Cineplex at e@Curve

Tesco Mutiara Damansara

The Curve

Penchala Link

Kidzania

Ikano Power Centre

IKEA

Bandar Utama

Lebuhraya Damansara-Puchong (LDP)

TTDI

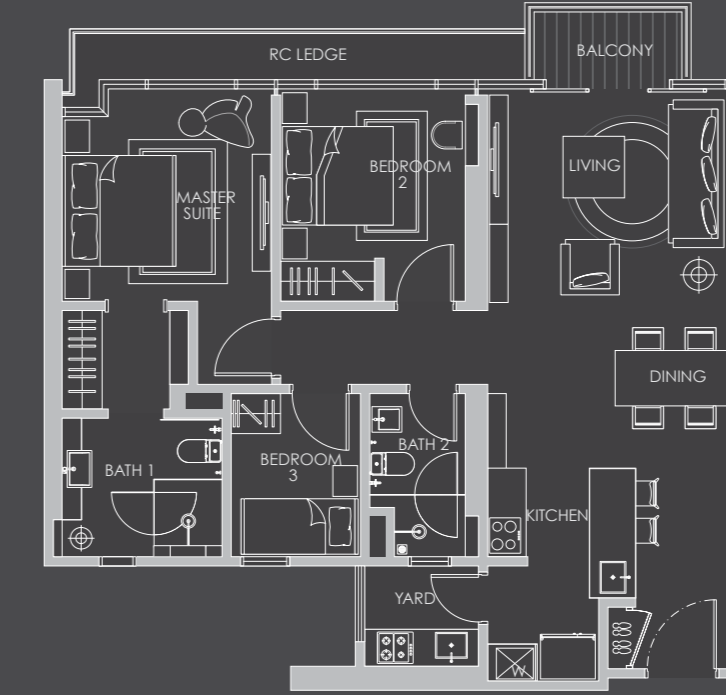
FACILITIES PLAN



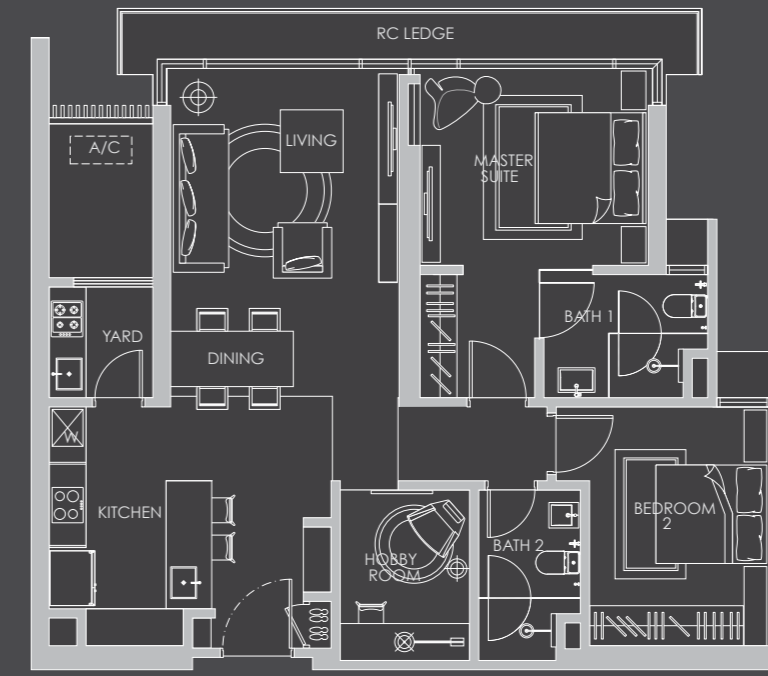
- 1 Sky Lounge
- 2 Outdoor Lounge Area
- 3 Infinity Pool
- 4 Kid's Pool
- 5 Timber Deck
- 6 Gym
- 7 Tennis Court
- 8 BBQ Lounge
- 9 Playground
- 10 Seating Lounge



FLOOR PLAN

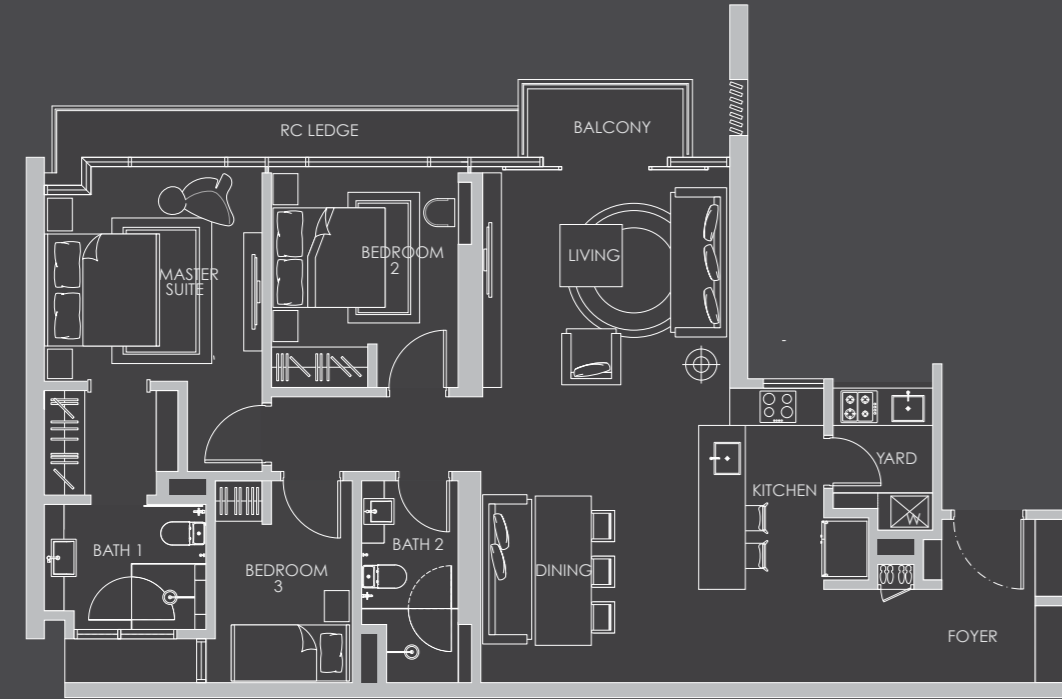


Type **A1**
1,092 sq. ft.
3 bedrooms



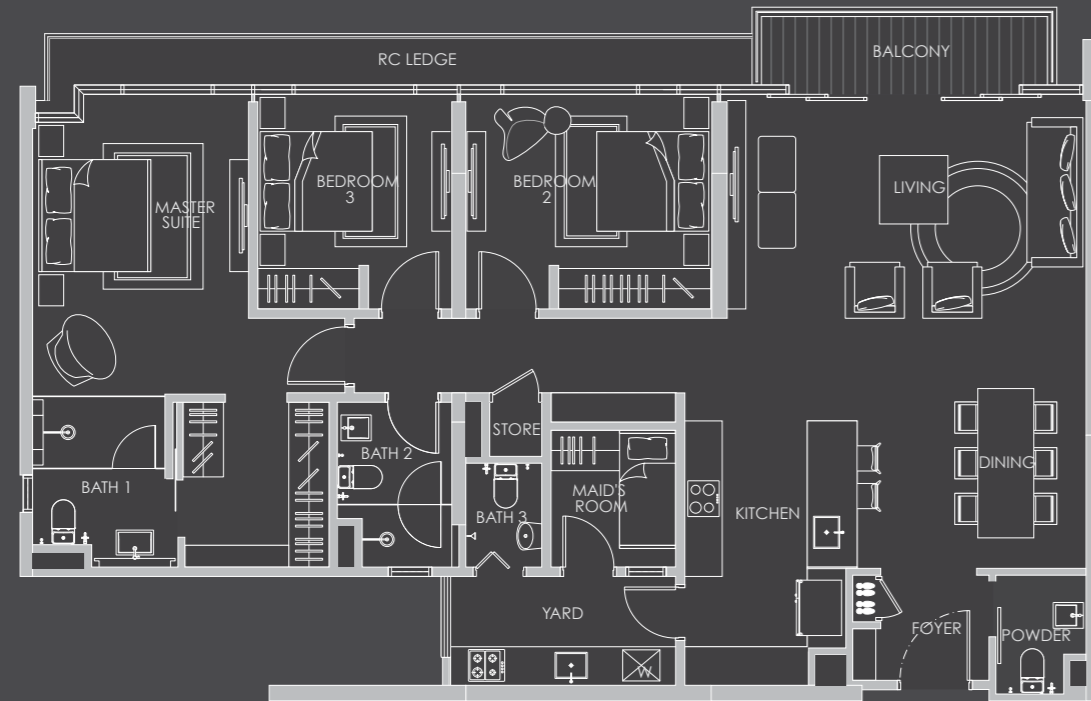
Type **A3**
1,099 sq. ft.
2 + 1 bedrooms

FLOOR PLAN



Type **B1**

1,283 sq. ft.
3 bedrooms



Type **C1**

1,705 sq. ft.
3 + 1 bedrooms

SPECIFICATIONS

	TYPE A & B	TYPE C
Structure	Reinforced Concrete	Reinforced Concrete
Roof	Concrete Flat Roof	Concrete Flat Roof
Wall	Concrete/Bricks/Drywall/System Wall	Concrete/Bricks/Drywall/System Wall
Ceiling	Skim Coat and Paint/Plaster Board	Skim Coat and Paint/Plaster Board
Window	Aluminium Framed Glass Panel	Aluminium Framed Glass Panel
Door	Main Entrance Others	Main Entrance Others
	- Fire Door - Flush Timber Door	- Fire Door - Flush Timber Door
Ironmongery	Quality Locksets	Quality Locksets
Floor Finishes	Living/Dining Bathroom Kitchen Yard Balcony Bedrooms	Living/Dining Bathroom Kitchen Maid's Room Yard Balcony Bedrooms
	- Quality Tiles - Timber Flooring	- Quality Tiles - Timber Flooring
Wall Finishes:	Generally Bathroom	Generally Bathroom Powder Room Yard
	- Plaster and Paint - Quality Tiles/Plaster and Paint	- Plaster and Paint - Quality Tiles/Plaster and Paint
Sanitaryware & Fittings	Bathrooms	Bathrooms
	- Water Closet, Wash Basin, Shower	- Water Closet, Wash Basin, Shower
Mechanical & Electrical	Ceiling & Wall Light Point 1.3a Socket Outlet Point 1.5a Socket Outlet Point Air-cond Point Ceiling Fan Point Exhaust Fan Point Water Heater Point	Ceiling & Wall Light Point 1.3a Socket Outlet Point 1.5a Socket Outlet Point Air-cond Point Ceiling Fan Point Exhaust Fan Point Water Heater Point
	SMATV Outlet Point Data Outlet Point Telephone Outlet Point Door Bell Point Door Chime Point Intercom Point Panic Button 3-Phase Incoming Power Supply	SMATV Outlet Point Data Outlet Point Telephone Outlet Point Door Bell Point Door Chime Point Intercom Point Panic Button 3-Phase Incoming Power Supply



COMMITTED TO EXCEL

Holding true to our mission, Glomac Berhad helps improve quality of life by providing better work and living environment. With a vision to be recognised as a world-class property developer, we deliver outstanding service, quality products and value for money for our customers. We ensure dedication, innovation and passion in all that we endeavour.

Completed Developments:

Suria Stonor, Kuala Lumpur
Suria Residen, Cheras
Aman Suria, Petaling Jaya



Current Developments:

Glomac Damansara, Kuala Lumpur
Saujana Rawang, Rawang
Saujana Utama, Sungai Buloh



For more information, call **03-7723 9000** or visit **www.glomac.com.my**

Level 1 Menara Glomac, Glomac Damansara,
Jalan Damansara, 60000 Kuala Lumpur

GLOMAC BERHAD 110532-M

In Collaboration with



T 03-7723 9000 W www.glomac.com.my
F 03-7729 7000 E enquiries@glomac.com.my

• Developer's License No.: 11914-1/02/2017/206 • Validity Period: 20/02/2012 – 19/02/2017 • Advertising & Sales Permit: 11914-1/481/2013(02) • Validity Period: 01/03/2012 – 28/02/2013 • Authority Approving Building Plan: Majlis Perbandaran Petaling Jaya • Building Plan Approval No.: MBPJ/120100/T/P10/1934/2011 • Land Encumbrances: Nil • Land Tenure: Freehold • Total No. Of Units: 299 • Development Type: Service Apartment (39 storey) • Expected Date of Completion: May 2015 • Selling Price: RM 940,000 (Min) - RM 1,636,683.10 (Max) • Bumiputera Discount: 7% • Restriction: Nil

