

LUCENTIA

RESIDENCES



BUKIT BINTANG
CITY CENTRE

ALL THAT YOU NEED,
EVERYTHING THAT YOU DESIRE



BUKIT BINTANG
CITY CENTRE



A Joint Development By:



BUKIT BINTANG
CITY CENTRE
A NEW
BEACON
IS LIT

Destined to be the new heartbeat of Kuala Lumpur, Bukit Bintang City Centre (BBCC) is a visionary, state-of-the-art integrated development designed to complement and enhance the city's cosmopolitan vibe. Offering extraordinary spaces for business, retail, entertainment and life, the 19.4-acre BBCC promises to light up the Golden Triangle.



THE STRIKINGLY MODERN
ENTRANCE STATEMENT



WATER FEATURES ENHANCE
THE SERENE AMBIENCE



THE GRAND LOBBY
RADIATES A QUIET YET
WARM WELCOME

LUCENTIA
LIGHT UP
YOUR LIFE

Lucentia is the first residential offering in BBCC. This high-rise residential development features two conjoined towers, soaring 47 and 35 floors respectively. Drawing inspiration from traditional Japanese paper lanterns, Lucentia is designed to infuse your world with light and a lightness of spirit. By day, the interior is flooded with natural light, and by night, it is softly illuminated, a welcoming beacon to guide you home.

FACILITIES DECK



A BREATHTAKING VIEW OF THE SWIMMING POOL

FOUR LEVELS OF DELIGHT AND MORE

Lucentia offers four levels of facilities, all thoughtfully curated to provide endless delight whatever your mood. There are myriad opportunities to embrace the active life and the outdoors at the two-tier Podium Deck on Level 3A. At the Sky Deck on Levels 33A and 35, immerse yourself in the extraordinary array of lifestyle and entertainment offerings, while enjoying the stellar views of the city skyline.



STUNNING VIEWS OF THE CITY SEEN FROM THE INFINITY POOL AND DECK AT LEVEL 35



LUCENTIA'S TWO TOWERS ARE CONJOINED VIA A SKY BRIDGE AT LEVELS 33A AND 35, WHERE THE FACILITIES DECK IS LOCATED



THE CHILL DECK

A LUSTROUS AMBIENCE

From the moment you step into Lucentia, you are enveloped by the light-filled serenity that inspired its name. The Zen-like ambience is enhanced by exquisite water features that fill the air with the soothing rhythm of flowing water.

RESIDENCES



THE LIGHTNESS
OF LUXURY

Discover your urban sanctuary in Lucentia. These residential suites have been designed to surround you with the ultimate luxuries that include stunning panoramic views of the city and beyond. With practical floor-plans and high quality finishes, these spaces offer an extraordinary canvas on which to express your unique personality.

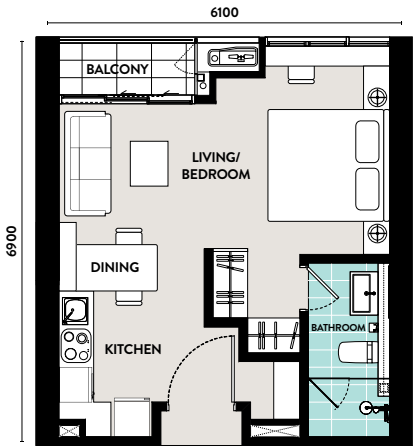


ACTUAL SHOW UNIT

FLOOR PLANS

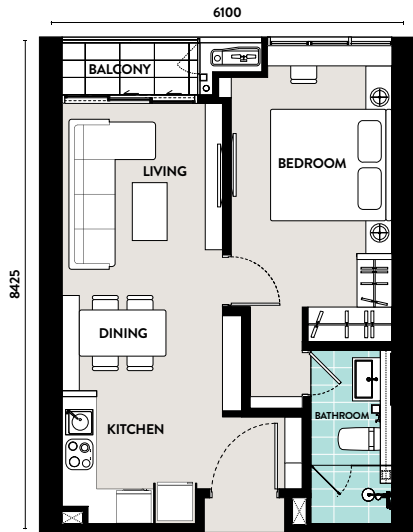
TYPE A
STUDIO

42 SQM
454 SQ FT



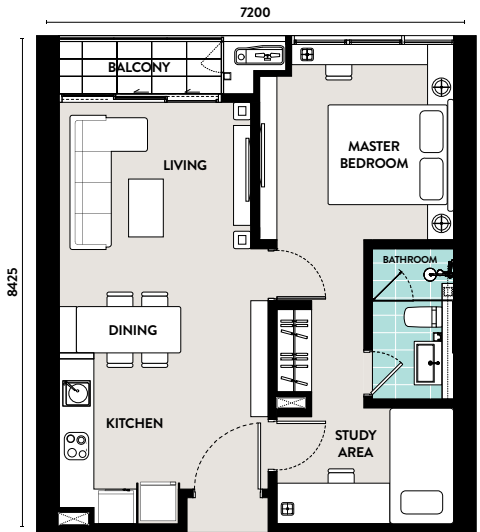
TYPE B
1 BEDROOM

51 SQM
554 SQ FT



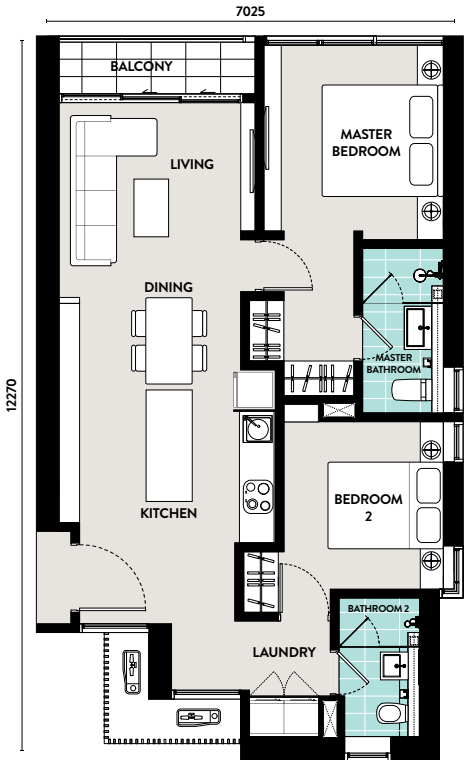
TYPE C
1 + 1 BEDROOM

61 SQM
654 SQ FT



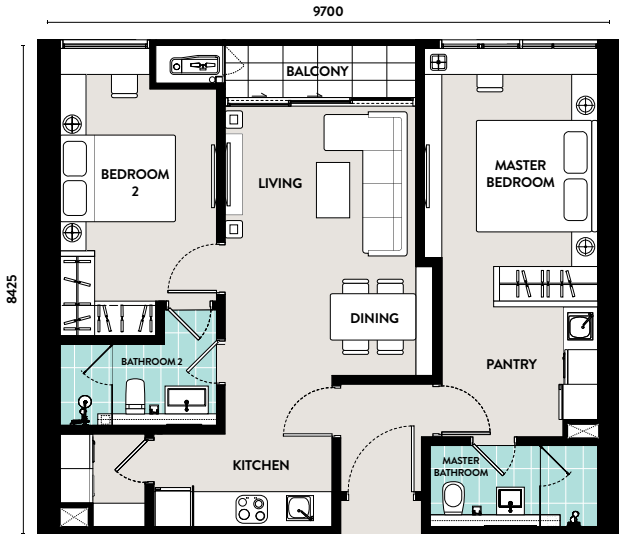
TYPE D
2 BEDROOM

80 SQM
859 SQ FT



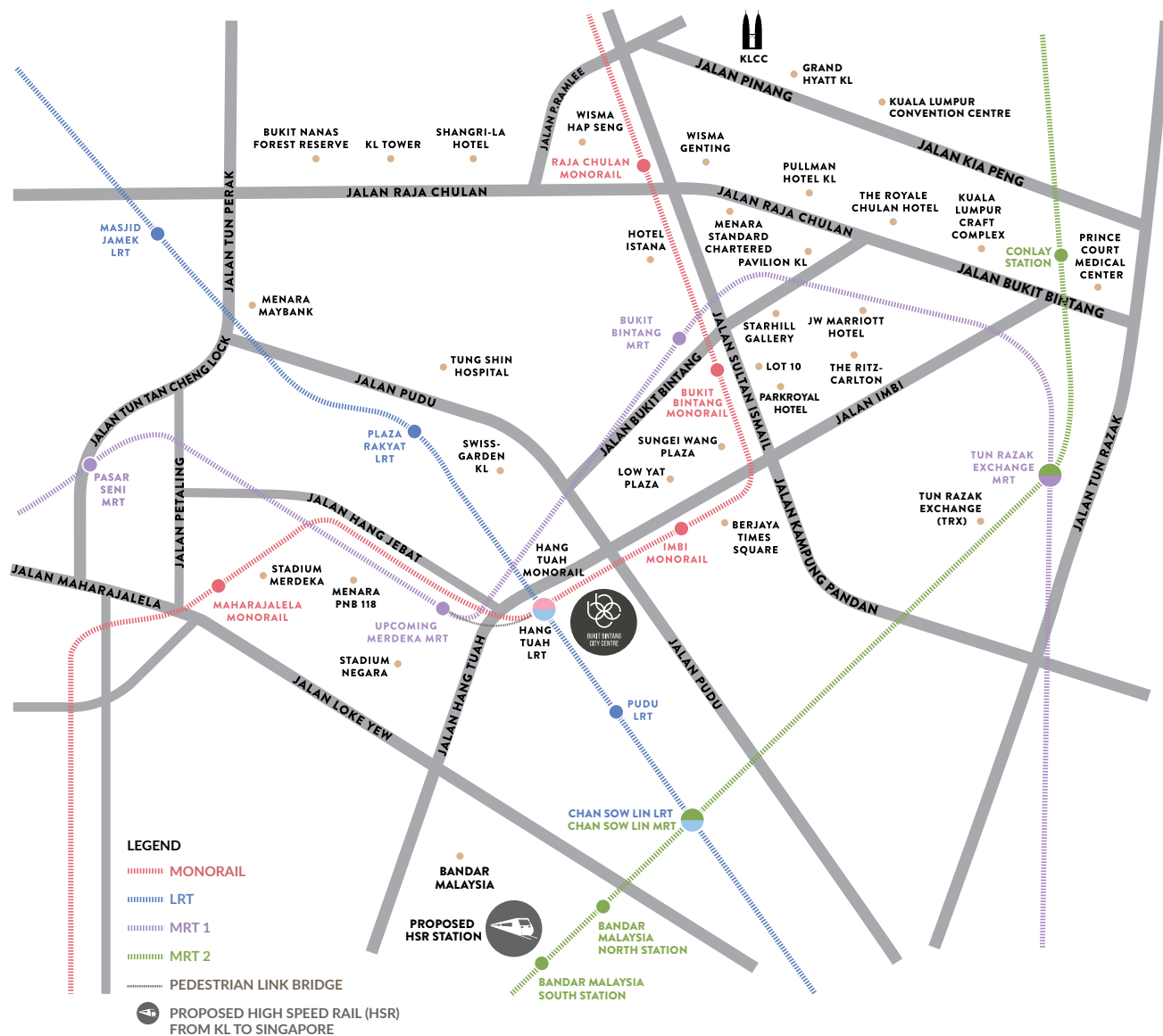
TYPE E
2 BEDROOM / DUAL KEY

82 SQM
882 SQ FT



BLAZING A TRAIL TO THE WORLD

BBCC is designed to welcome visitors from all corners of the globe. At the same time, BBCC will connect the city to the world via an annexed transit hub that will encompass the existing Hang Tuah monorail and LRT stations, as well as provide linkage to the upcoming Merdeka MRT station. The proposed High Speed Rail station will be just few stops away via the LRT.



BBCC Development Sdn Bhd 1129028-T
No. 2, Jalan Hang Tuah, 55100 Kuala Lumpur
F: +603 2143 0086 E: info@bbcckl.com

Visit Our Sales Gallery Today!
GPS : 3.141656, 101.707755
Monday to Friday 9am - 6pm
Weekends and Public Holidays 10am - 6pm

+603 2145 2255
www.bbcckl.com

Development Manager:

ECOWORLD
CREATING TOMORROW & BEYOND
Eco World Development Management (BBCC) Sdn. Bhd. (1986337-W)
(Formerly known as Eco World Development Management Sdn. Bhd.)

Developer • BBCC Development Sdn Bhd, Company No: 1129028-T, No. 2, Jalan Hang Tuah, 55100 Kuala Lumpur. T: +603 2145 2255. F: +603 2143 0086 •
Building Plan Approving Authority : Dewan Bandaraya Kuala Lumpur • **Approved Plan No** : BP T4, OSC 20161384 • **Expected Date of Completion** : 7 March 2021 (54 month) •
Land Tenure: Leasehold (99 years) expired by 5 December 2110 • **Restriction of Interest**: The Land Cannot be Transferred, Leased and Changed with consent from Dewan Bandaraya Kuala Lumpur •
Land Encumbrance : Nil • **Developer License** : 14510-1/09-2018/0745(L) • **Validity** : 29/09/2016 - 28/09/2018 • **Advertising Permit** : 14510-1/09-2018/0745(P) • **Validity**: 29/09/2016 - 28/09/2018 •
Parcel 3 Serviced Apartment Block 1 (47 Storey) & 2 (35 Storey) (LUCENTIA) • **Total Unit** : 666 (Block 1: 393, Block 2: 273) •
Selling Price : Block 1 (Min) RM782,000 - (Max) RM2,056,250 • Block 2 (Min) RM1,096,920 - (Max) RM2,178,000

All art renderings and photographs contained in this circular are artist's impression only. The Developer reserves the right to modify any part or parts of the building prior to completion as directed or approved by the architects and/or the relevant authorities. All plans, layout, information and specifications are subject to change and cannot form part of an offer or contract presentation.