

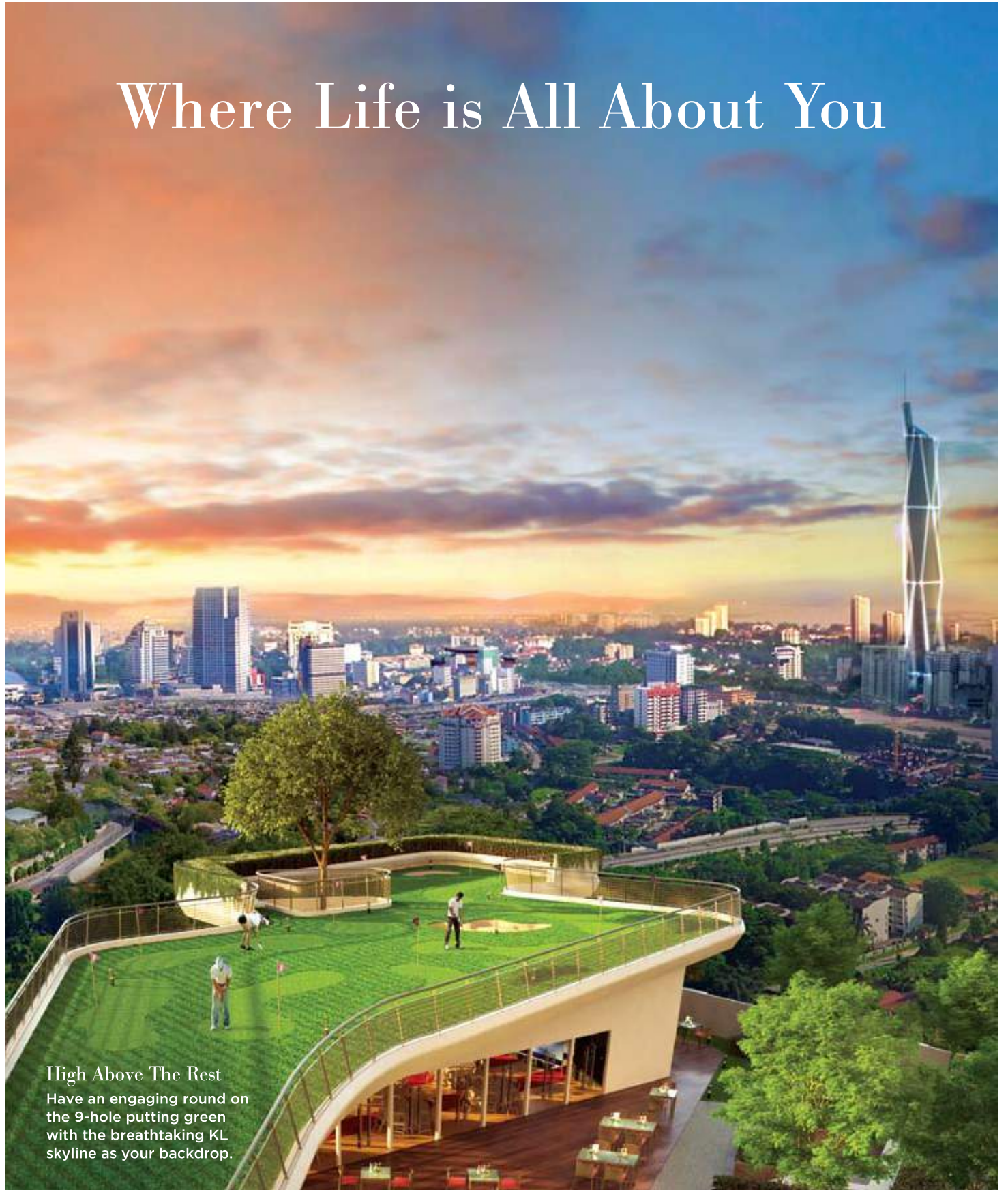


THE
ROBERTSON



GAMUDA LAND

Where Life is All About You



High Above The Rest

Have an engaging round on the 9-hole putting green with the breathtaking KL skyline as your backdrop.



Stylish Comfort

Comprehensive and uniquely designed facilities that include an infinity pool on the podium level.



Concierge Service

Experience refined living with a dedicated concierge service to take care of life's little details and chores for you.

In the Heart of Kuala Lumpur



A Vibrant Epicentre of Life

The Robertson is your sanctuary in the heart of the city, central to popular attractions of Kuala Lumpur. Come home each day to this desired address and experience contemporary urban living, mere steps away from LRT, MRT, Monorail stations, as well as the food, lifestyle and fashion landmarks of Bukit Bintang.

EASY ACCESSIBILITY



Location

Stylish freehold residences that are within walking distance from the Bukit Bintang shopping district. Located close to the upcoming Merdeka PNB118, an iconic commercial tower in KL city.



Public Transport

Transit oriented development close to the Puduraya Transportation Hub, LRT, MRT and Monorail stations.

RETAIL & FOOD HAVEN



Shopping Destination

Be spoilt for choice and explore the nearby Bukit Bintang shopping district that's a perfect locale for your retail therapy.



Food Paradise

Indulge yourself at the food havens of Changkat Bukit Bintang, Jalan Alor and Petaling Street that are all just minutes away.

CONVENIENT AMENITIES



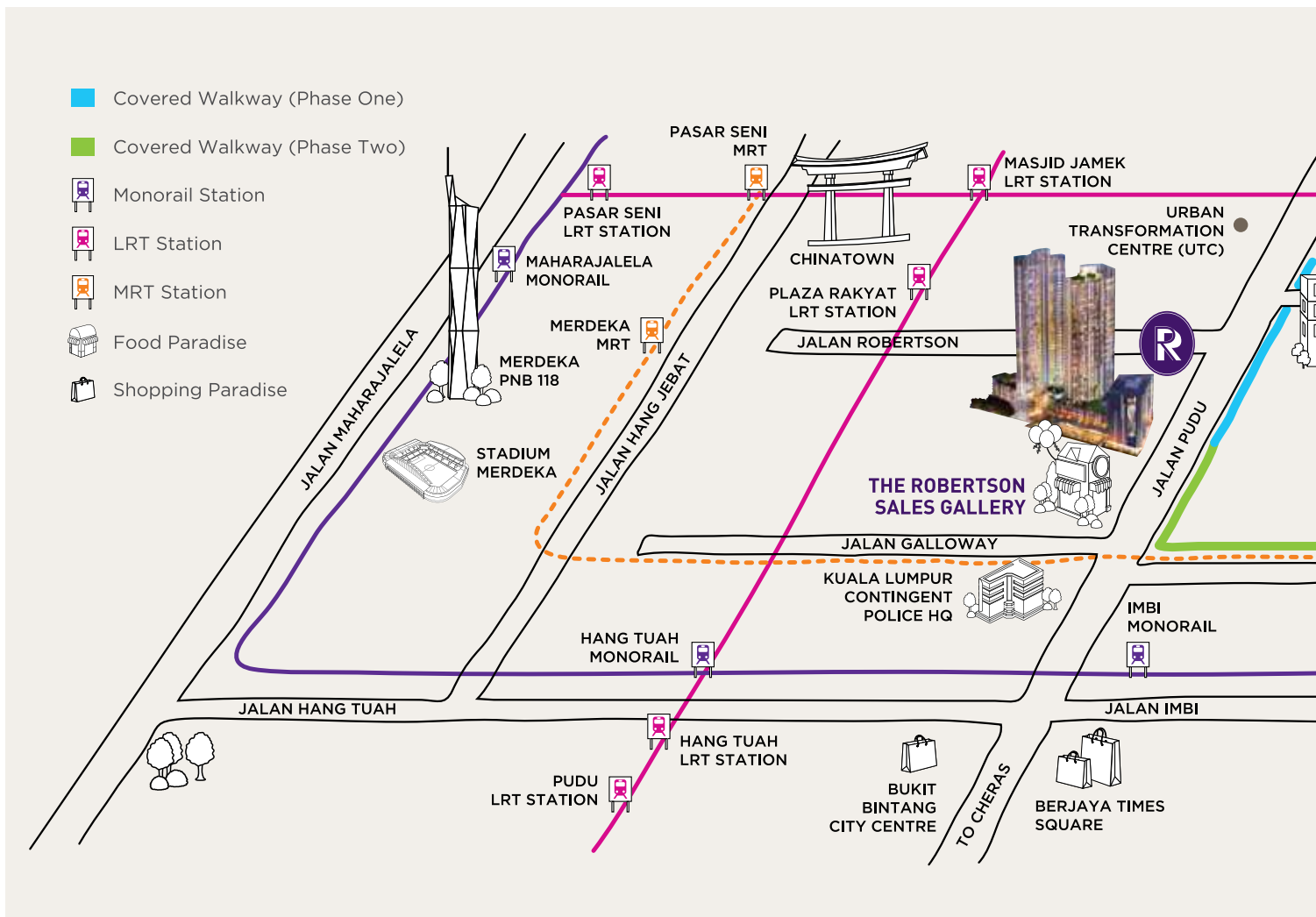
Covered Walkway

A shaded passageway that connects The Robertson to nearby LRT/MRT stations provides convenience as well as safety for pedestrians.



Multi-Tiered Security

With 24 hours security, The Robertson provides the perfect setting for complete peace of mind.



COMPREHENSIVE FACILITIES



Lifestyle Retail

An attached retail mall has all your daily essentials right at your doorstep.



EV Charging Stations

20 charging points are strategically positioned on the parking levels. Providing you with the convenience of recharging your electric vehicle.

QUALITY ASSURED



GBI Certified

The Robertson has achieved a Green Building Index (GBI) provisional Gold certification.



Conquas & Qlassic Rated

The Robertson will be CONQUAS & QCLASSIC rated, thus adhering to world-class building and construction standards.

ALL WITHIN YOUR REACH

SHOPPING

- 1km** to Berjaya Times Square
- 1.5km** to Pavilion KL & Starhill
- 2km** to Suria KLCC

HOSPITAL & SCHOOL

- 100m** to Tung Shin Hospital
- 1.3km** to St John's International School

OTHERS

- 500m** to Jalan Alor Food Paradise
- 950m** to China Town
- 1km** to Changkat Bukit Bintang

PUBLIC TRANSPORT

200m

Plaza Rakyat LRT Station

600m

Hang Tuah LRT Station

600m

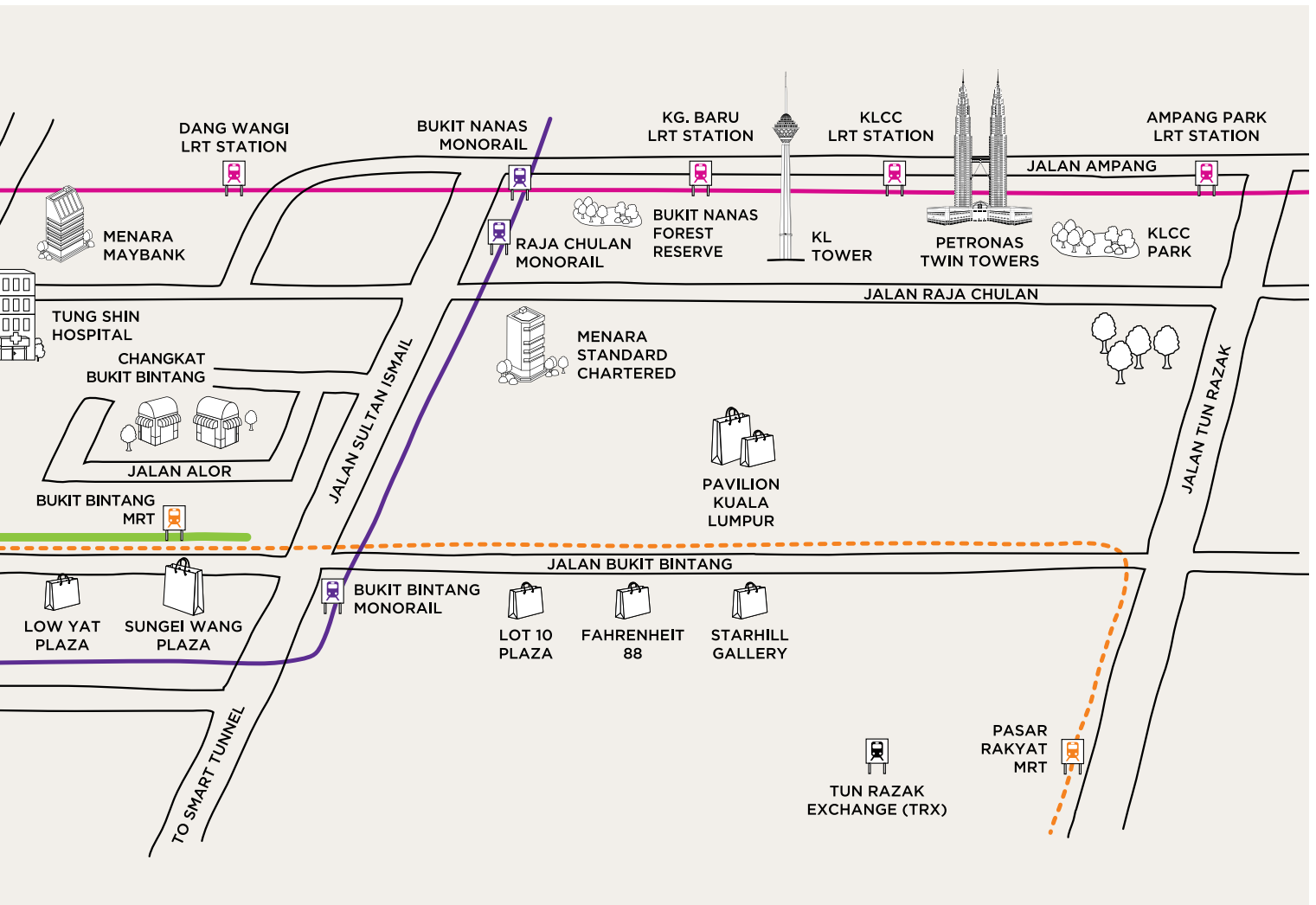
Imbi Monorail Station

700m

Merdeka MRT Station

800m

Bukit Bintang Monorail & MRT Station



LAYOUT PLANS

Freehold Residences

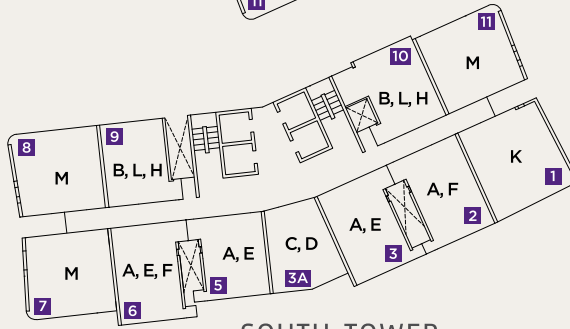
KLCC

NORTH TOWER

KL Tower



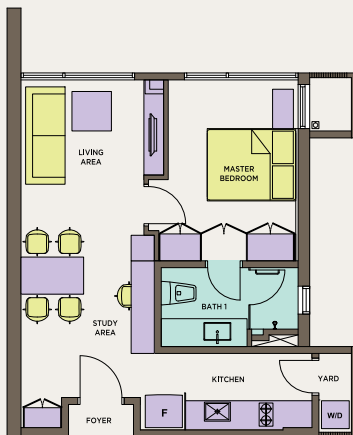
Tun Razak Exchange (TRX)



SOUTH TOWER

Bukit Bintang City Centre (BBCC)

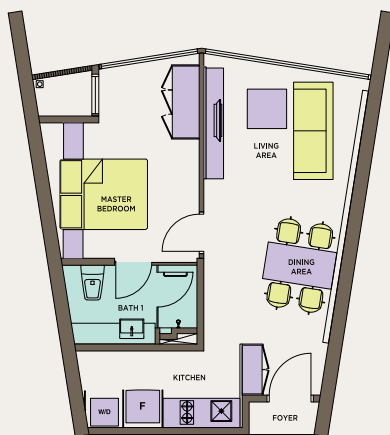
- Proposed Highest Tower in Malaysia
Merdeka PNB 118 (118 storey)



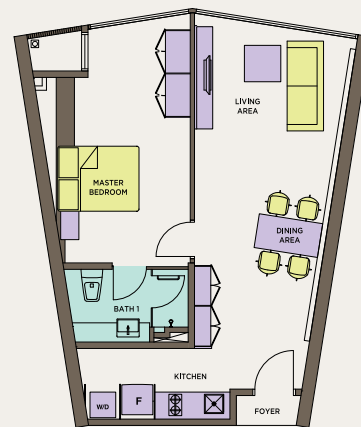
TYPE A
538sqft



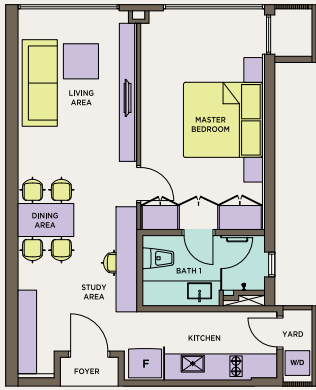
TYPE B
538sqft



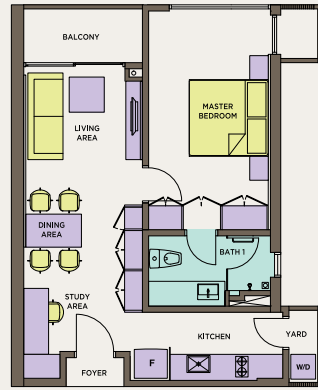
TYPE C
527sqft



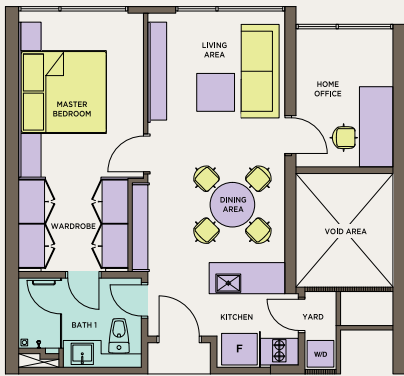
TYPE D
657sqft



TYPE E
624sqft



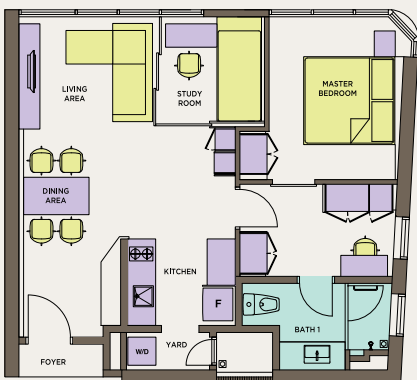
TYPE F
624sqft



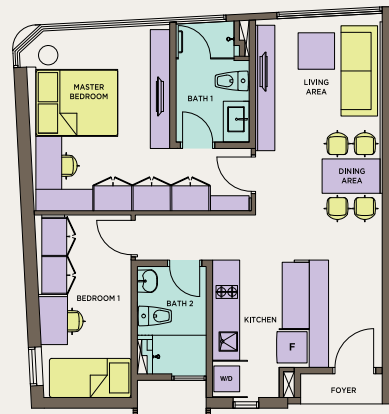
TYPE L
646sqft



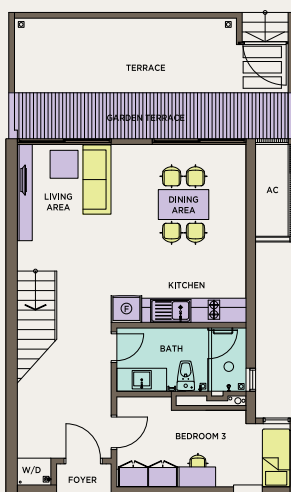
TYPE H
646sqft



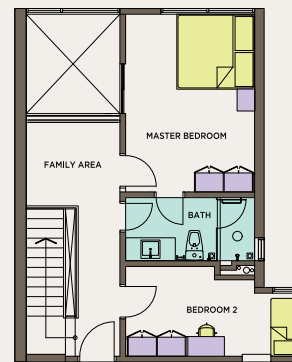
TYPE M
689sqft



TYPE K
807sqft



TYPE DP-1 (Lower Floor)



TYPE DP-1 (Upper Floor)

TOTAL BUILT-UP : 1,162sqft
GARDEN TERRACE : 247sqft

FOR MORE INFO, CALL **603 2148 6668**

The Robertson Sales Gallery No. 119, Jalan Pudu, 55100 KL, Malaysia.
E. msd.robertson@gamudaland.com.my www.gamudaland.com.my

GAMUDA LAND

Developed By: Idaman Robertson Sdn Bhd (598112-x) No 119, Jalan Pudu, 55100 Kuala Lumpur. Tel: 603-2148 6668 Fax: 603-2143 8881 Developer's License No.:13061-1/06-2017/02048(L) • Validity Period: 18/06/2016 - 17/06/2017 • Advertising Permit No.: 13061-1/06-2017/02048(P) • Validity Period: 18/06/2016 - 17/06/2017 • Tenure of Land: Freehold • Land Encumbrances: NIL • Approving Authority: Dewan Bandaraya Kuala Lumpur • Building Plan Approval No.: BPT4OOSC20150154 • Expected Date of Completion: April 2018 • Type of House: Service Apartment • Total units (North Tower): 375 units • Selling Price : RM733,500(min) - RM2,214,875(max) • Total units (South Tower): 418 units • Selling Price: RM843,500(min) - RM2,300,063(max) • Type A & A1: 154 units (538 sq.ft.), Type B & B1: 49 units (538 sq.ft.), Type C: 28 units (527 sq.ft.), Type D: 40 units (657 sq.ft.), Type E & E1: 67 units (624 sq.ft.), Type F & F1: 63 units (624 sq.ft.), Type G & G1: 33 units (646 sq.ft.), Type H & H1: 25 units (646 sq.ft.), Type L & L1: 37 units (646 sq.ft.), Type J & J1: 102 units (689 sq.ft.), Type M & M1: 114 units (689 sq.ft.), Type K: 72 units (807 sq.ft.), Type DP1: 4 units (1,162 sq.ft.), Type DP2: 3 units (1,162 sq.ft.), Type DP3: 2 units (1,227 sq.ft.) • Bumiputra Discount: 5%.