

# EXPRESSIONZ

PROFESSIONAL SUITES

T U N R A Z A K



EXPRESS TO IMPRESS



## IN THE BUZZ OF IT ALL

### PROFESSIONAL SUITES

Expressionz Professional Suites - Where no boundaries exist to confine you to a fixed space. It is a place where your impulses are allowed to break free and where its versatility reveals distinct surprises every day. Expressionz Professional Suites is a space for whatever purpose you may have in mind. Whether it be a chic private den or a suave working suite, it is built to redefine adaptability.

Located in the thick of cosmopolitan life, Expressionz at Jalan Tun Razak puts you in the spot where you want to be. With modern lifestyle conveniences that are aplenty, Expressionz Professional Suites will leave you wanting for nothing more.

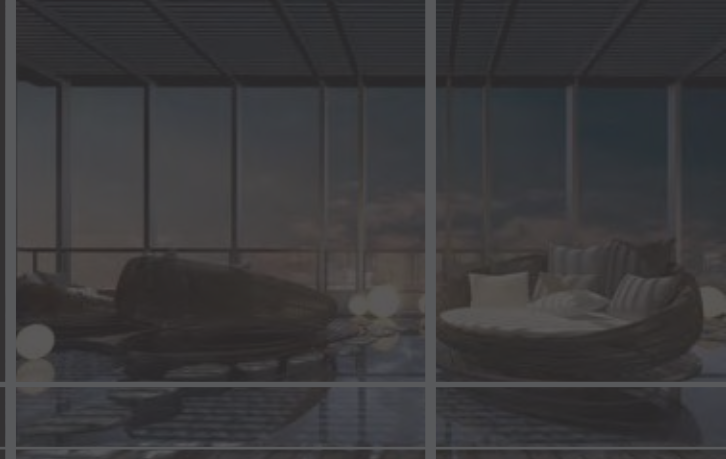
# TAILOR MAKE YOUR SURROUNDINGS

A space without constraints. Expressionz Professional Suites are built on the idea that your space should reflect you. Inbuilt with an endless array of customizable options, the versatility and flexibility of your chosen space are as limitless as your imagination. Transform your unit into a private meeting room, a cutting edge recording studio, or a personal yoga den, whatever your heart desires, realize it here.

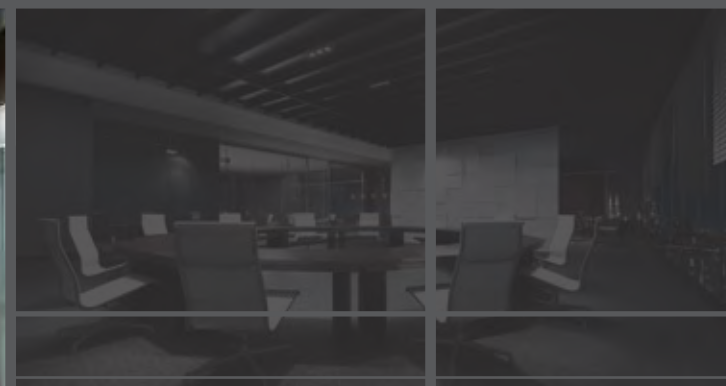
Take advantage of a revolutionarily adaptable meeting hub, where even the table is tailor made to suit any needs you may have. Whether planning a board meeting, training session, video screening or professional presentation, rest assured the space will evolve around you, ensuring the fulfillment of all you could desire.



*\* Artist's Impression*



*\* Artist's Impression*



*Sport Lounge*



WHERE TOIL  
MEETS TRANQUILITY

\* Artist's Impression

Enjoy the relaxation afforded by all the modern conveniences you could ever need. Cool off after a meeting by diving straight into the welcoming waters of the pool, sit down for a quiet meal at the end of a long day of work, or simply have a drink and take in the wonders of the city skyline. Whatever it is that recharges you; indulge in your leisure just as heartily as you get down to work.

Set in the heart of the city, rest assured that only the best will do at Expressionz Professional Suites. In close proximity to all of Kuala Lumpur's hotspots, maximize on your urban lifestyle by living where the very core of the action is.

## LIST OF FACILITIES

### **EASE OF TRANSPORTATION**

Expressionz offers the availability of a shuttle bus that transports you to neighbouring KL hotspots at scheduled times.

### **A PEACE OF MIND**

With 24-hour security and CCTV surveillance, residents can have a peace of mind, living in a safe and secure environment.

### **ALWAYS A WARM WELCOME**

Enjoy the personalised services our concierge has to offer. Feel free to reach out if you have any special needs or requests.

### **Ground Level**

Reception Lobby  
Floating Lounge

### **Level 08**

Courtyard Garden  
Eco Kitchen  
Jacuzzi  
Laundry Lounge  
Swimming Pool  
Nursery / Kid Play Room  
Play Terrace  
Pool Deck  
Pool Lounge  
Pool Villa  
Sculpture Water Pool  
Wading Pool

### **Level 21**

Business Hub  
Business Lounge  
Meeting Lounge

### **Level 41**

Floating Lounge  
Sky Lounge  
Sky Dining

### **Level 48**

Sky Gymnasium  
Sky Pool  
Sky Viewing Deck



\* Artist's Impression

# FACILITY PLAN



# BUSINESS HUB LEVEL 21



COURTYARD GARDEN  
ECO KITCHEN  
JACUZZI  
LAUNDRY  
LOUNGE  
SWIMMING POOL  
NURSERY / KID PLAY ROOM

PLAY TERRACE  
POOL DECK  
POOL LOUNGE  
POOL VILLA  
SCULPTURE WATER POOL  
WADING POOL

BUSINESS HUB  
BUSINESS LOUNGE  
MEETING LOUNGE

# SKY FACILITIES

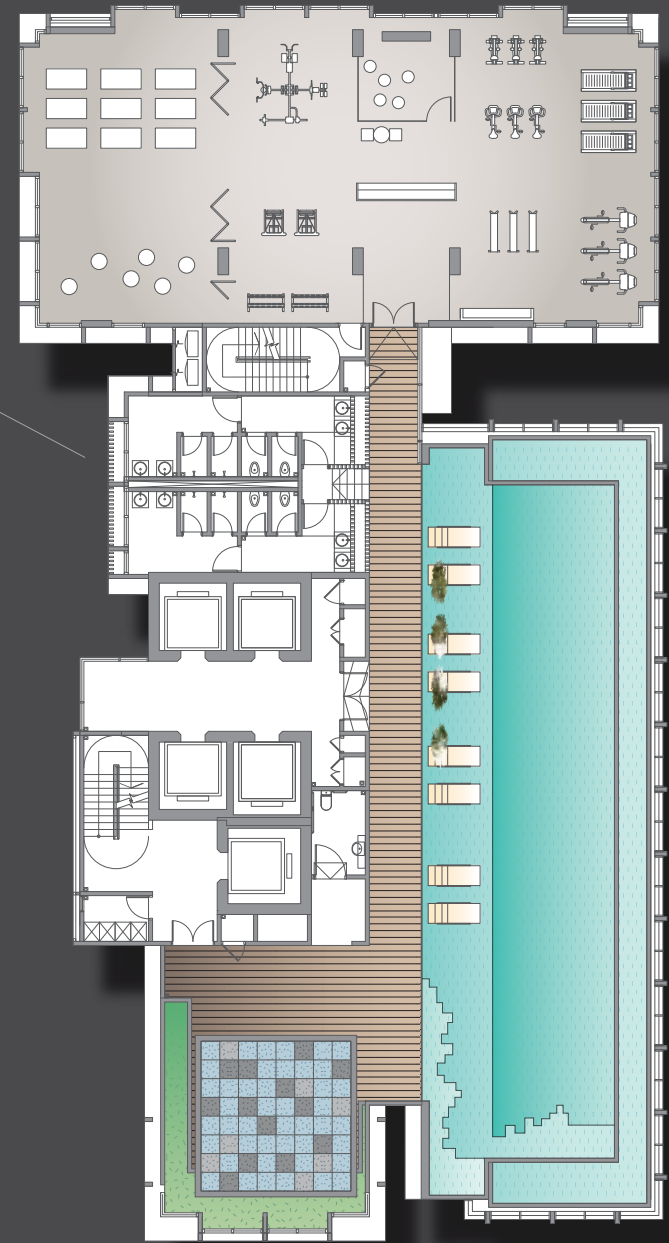
LEVEL 41 | TOWER B



FLOATING LOUNGE  
SKY LOUNGE  
SKY DINING

# SKY FACILITIES

LEVEL 48 | TOWER A



SKY GYMNASIUM  
SKY POOL  
SKY VIEWING DECK



\* Artist's Impression

# FLOOR PLAN

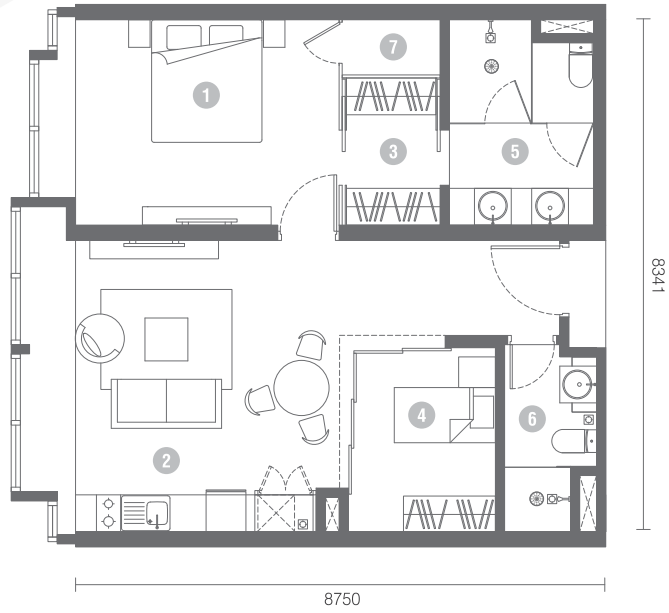


# FLOOR Plan & LAYOUT Plan

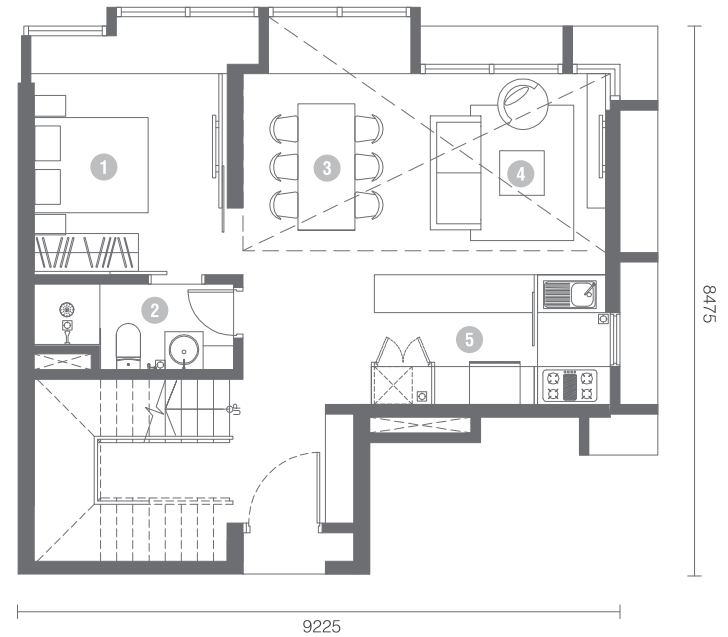


\* Artist's Impression

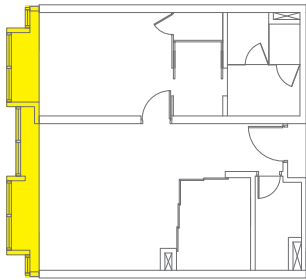
TYPE  
**A1-A**  
868 sq.ft.  
**2B + 1 UTILITY**



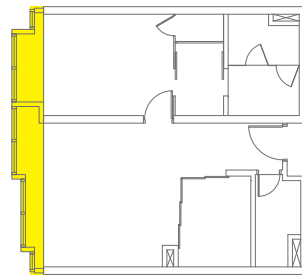
TYPE  
**B1-A**  
1245 sq.ft.  
**LOFT (DUPLEX) 2B**



TYPE  
**A1-B**  
868 sq.ft.  
**2B + 1 UTILITY**



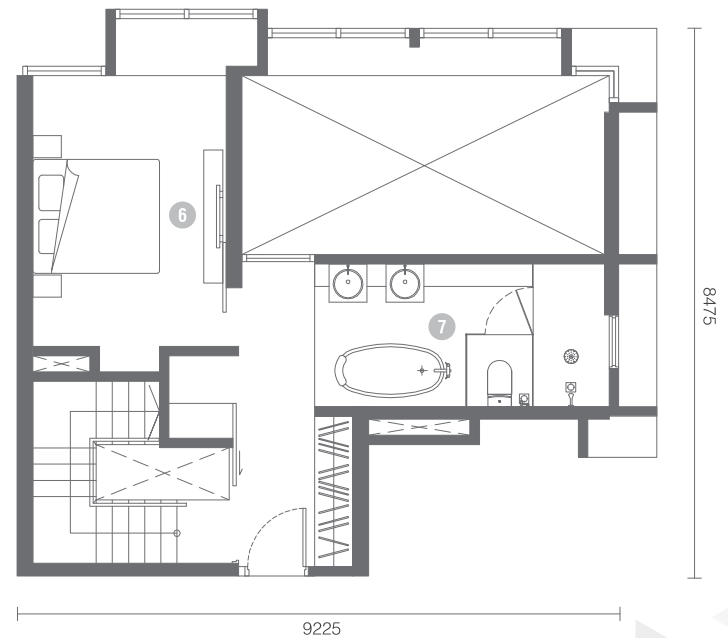
TYPE  
**A1-C**  
868 sq.ft.  
**2B + 1 UTILITY**



1. MASTER BEDROOM
2. LIVING AREA / KITCHEN / DINING
3. WALK-IN WARDROBE
4. BEDROOM 1
5. MASTER BATHROOM
6. BATHROOM 1
7. UTILITY ROOM

\* Highlighted area indicates the build-up difference of respective unit type

LOWER  
744 sq.ft.



UPPER  
501 sq.ft.

1. BEDROOM 1
2. BATHROOM 1
3. DINING AREA
4. LIVING ROOM
5. KITCHEN
6. MASTER BEDROOM
7. MASTER BATHROOM

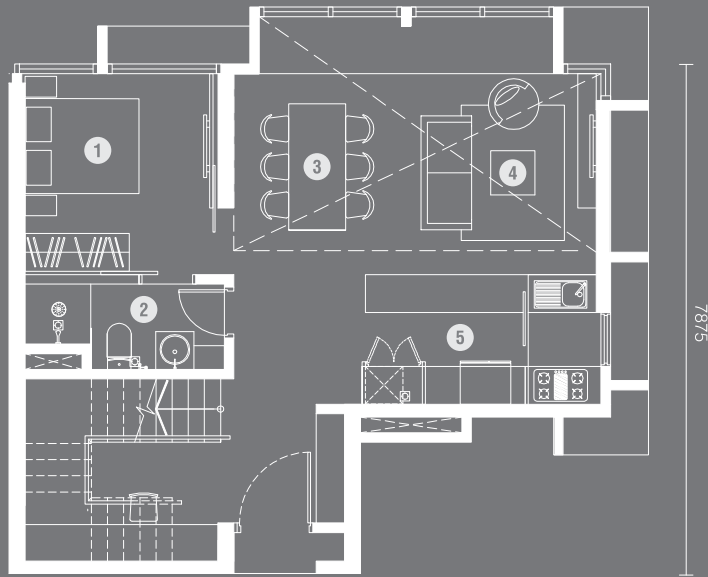


TYPE

# B1-B

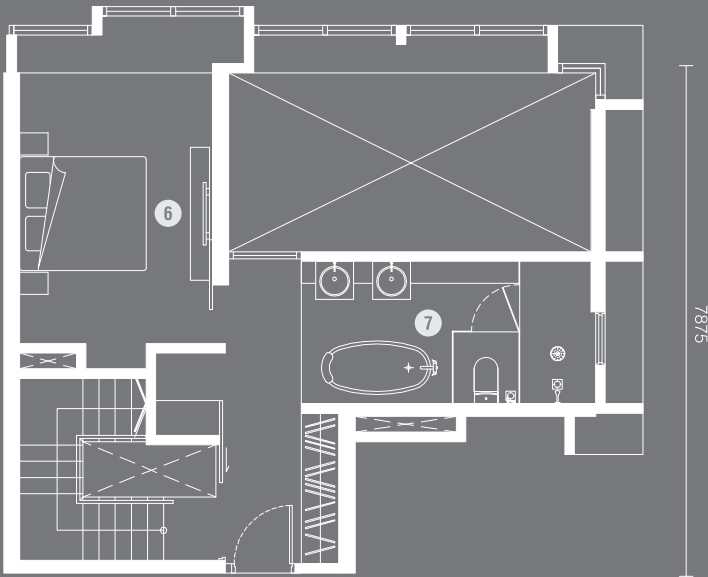
1244 sq.ft.

LOFT (DUPLEX) 2B



7875

LOWER  
735 sq.ft.



7875

UPPER  
509 sq.ft.

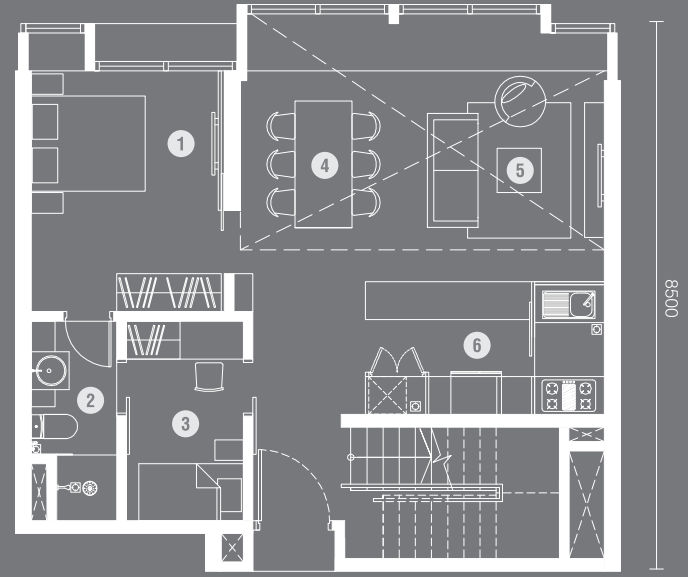
- 1. BEDROOM 1
- 2. BATHROOM 1
- 3. DINING AREA
- 4. LIVING ROOM
- 5. KITCHEN
- 6. MASTER BEDROOM
- 7. MASTER BATHROOM

TYPE

# B2-A

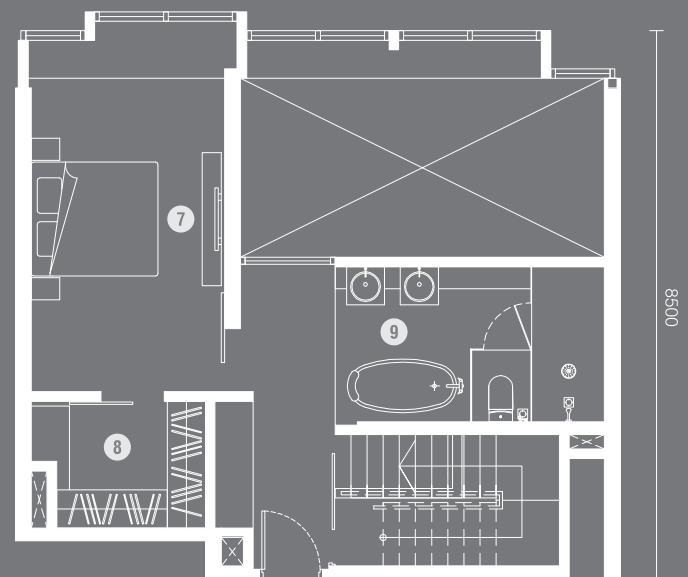
1405 sq.ft.

LOFT (DUPLEX) 3B



8250

LOWER  
814 sq.ft.



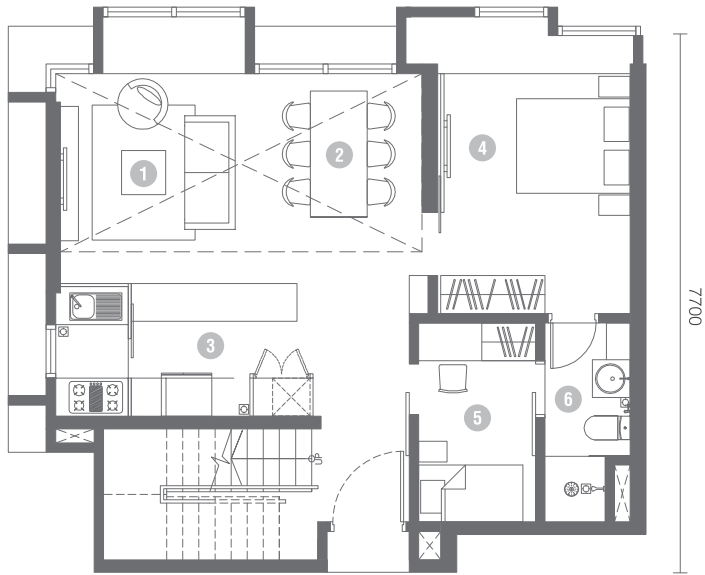
8250

UPPER  
591 sq.ft.

- 1. BEDROOM 1
- 2. BATHROOM 1
- 3. BEDROOM 2
- 4. DINING AREA
- 5. LIVING ROOM
- 6. KITCHEN
- 7. MASTER BEDROOM
- 8. WALK-IN WARDROBE
- 9. MASTER BATHROOM

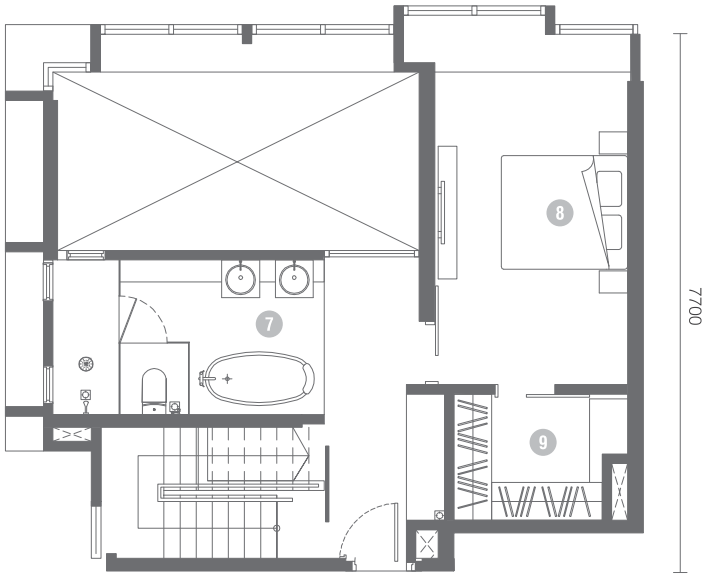
TYPE  
**B2-B**

1400 sq.ft.  
**LOFT (DUPLEX) 3B**



9025

LOWER  
807 sq.ft.



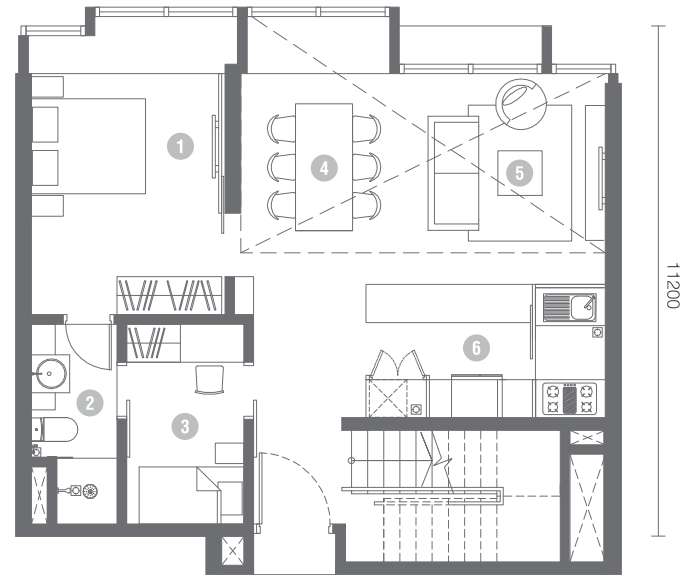
9025

UPPER  
597 sq.ft.

- |                |                     |
|----------------|---------------------|
| 1. LIVING ROOM | 6. BATHROOM         |
| 2. DINING AREA | 7. MASTER BATHROOM  |
| 3. KITCHEN     | 8. MASTER BEDROOM   |
| 4. BEDROOM 1   | 9. WALK-IN WARDROBE |
| 5. BEDROOM 2   |                     |

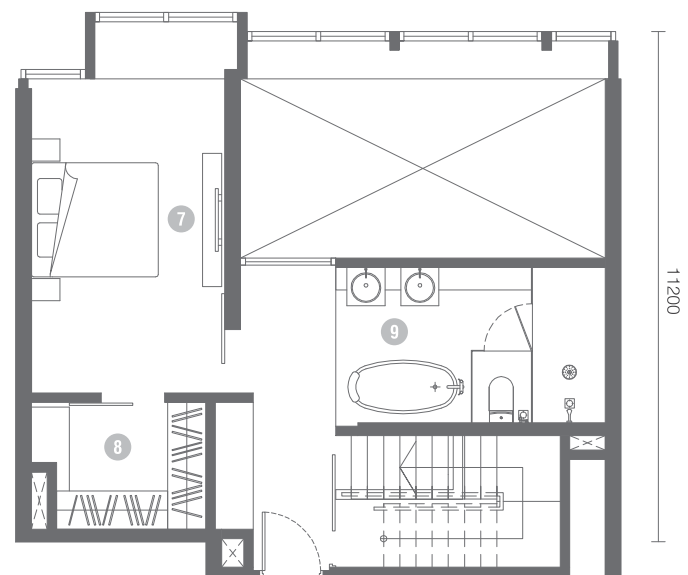
TYPE  
**B2-C**

1391 sq.ft.  
**LOFT (DUPLEX) 3B**



8250

LOWER  
806 sq.ft.



8250

UPPER  
585 sq.ft.

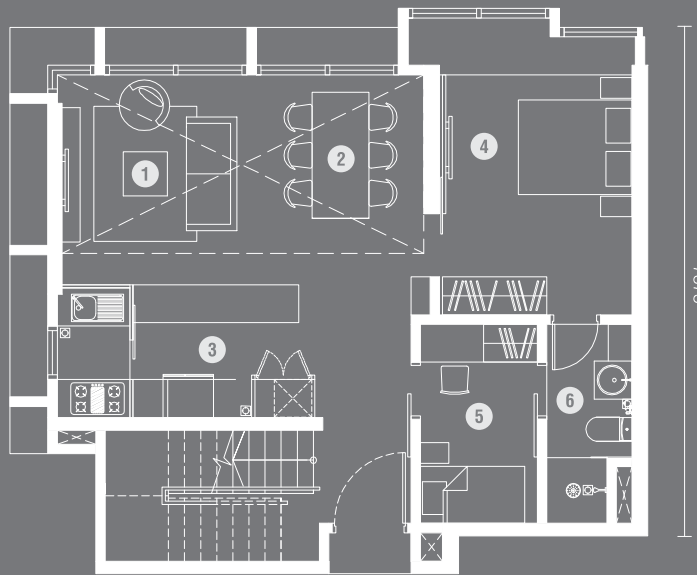
- |                |                     |
|----------------|---------------------|
| 1. BEDROOM 1   | 6. KITCHEN          |
| 2. BATHROOM 1  | 7. MASTER BEDROOM   |
| 3. BEDROOM 2   | 8. WALK-IN WARDROBE |
| 4. DINING AREA | 9. MASTER BATHROOM  |
| 5. LIVING ROOM |                     |

TYPE

# B2-D

1347 sq.ft.

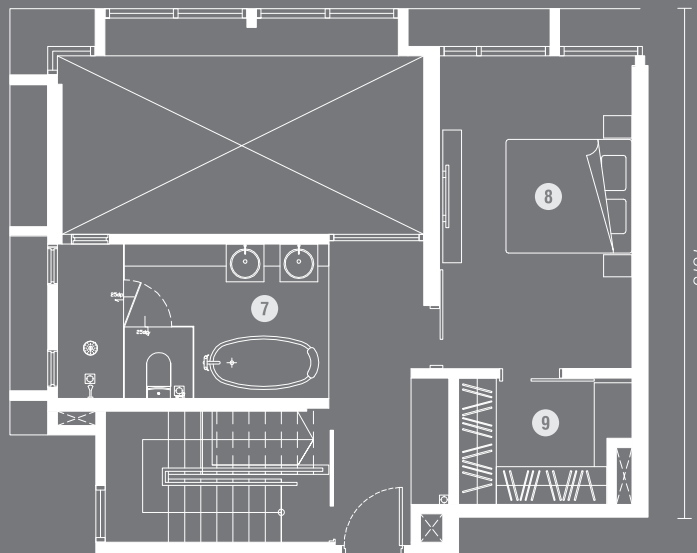
LOFT (DUPLEX) 3B



9025

7875

LOWER  
785 sq.ft.



9025

7875

UPPER  
562 sq.ft.

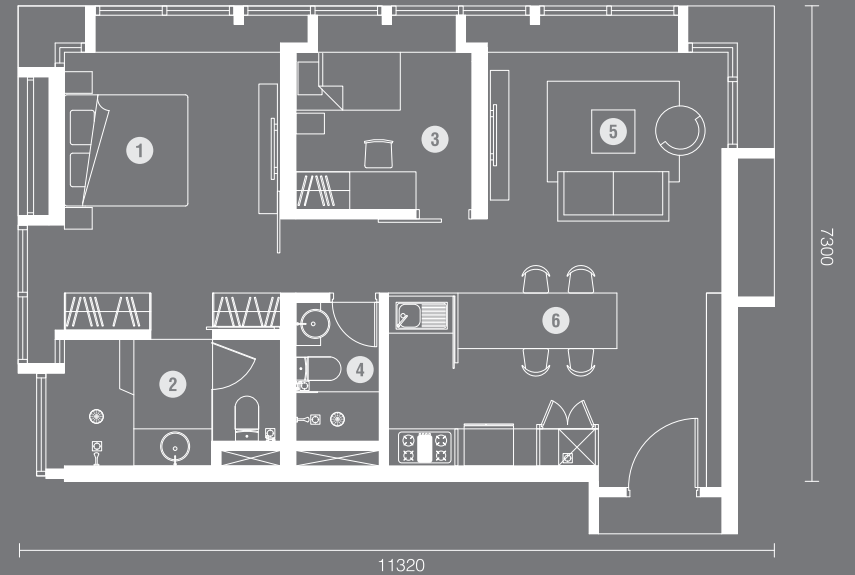
- 1. LIVING ROOM
- 2. DINING AREA
- 3. KITCHEN
- 4. BEDROOM 1
- 5. BEDROOM 2
- 6. BATHROOM
- 7. MASTER BATHROOM
- 8. MASTER BEDROOM
- 9. WALK-IN WARDROBE

TYPE

# C1-A

914 sq.ft.

2B



11320

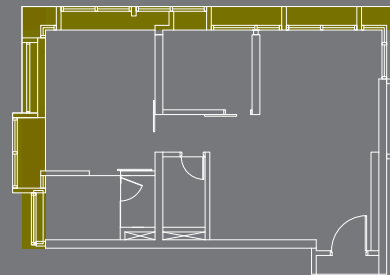
7300

TYPE

# C1-B

891 sq.ft.

2B

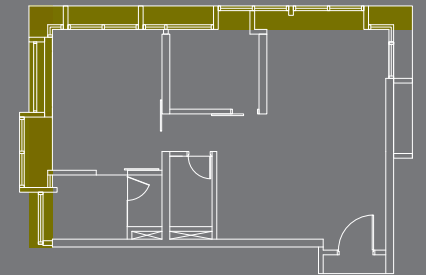


TYPE

# C1-C

891 sq.ft.

2B

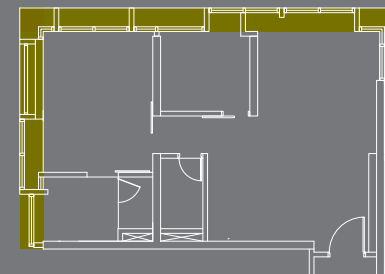


TYPE

# C1-D

883 sq.ft.

2B

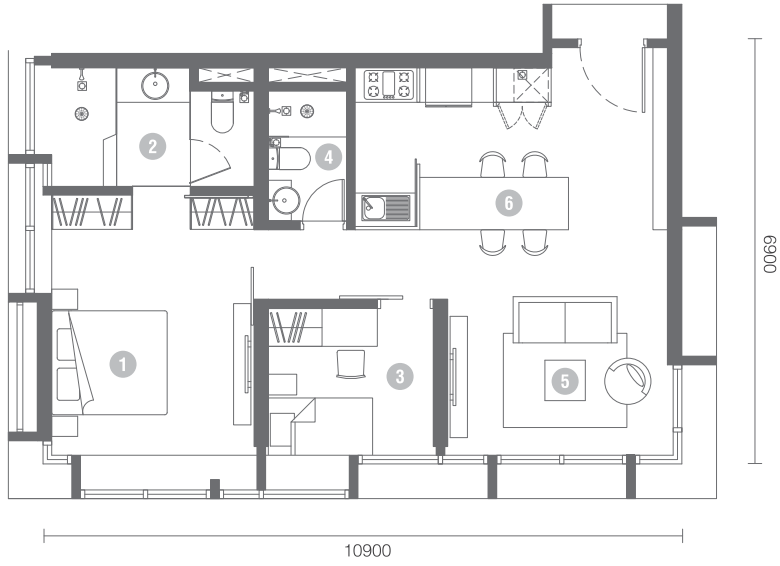


- 1. MASTER BEDROOM
- 2. MASTER BATHROOM
- 3. BEDROOM 1
- 4. BATHROOM 1
- 5. LIVING ROOM
- 6. KITCHEN & DINING

\* Highlighted area indicates the build-up difference of respective unit type

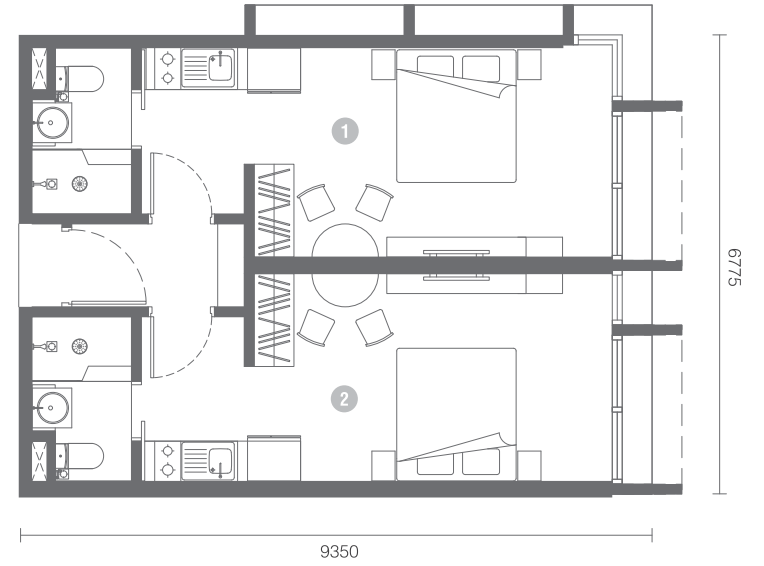
TYPE  
**C1-E**  
875 sq.ft.  
**2B**

- 1. MASTER BEDROOM
- 2. MASTER BATHROOM
- 3. BEDROOM 1
- 4. BATHROOM 1
- 5. LIVING ROOM
- 6. KITCHEN & DINING

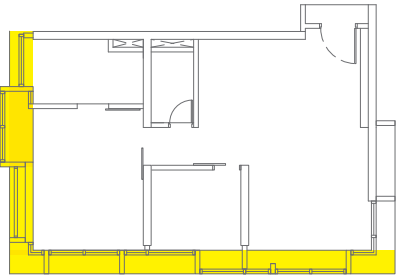


TYPE  
**D1-B**  
649 sq.ft.  
**DUAL KEY 2B**

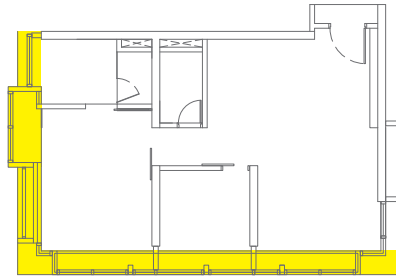
- 1. SUITE 1
- 2. SUITE 2



TYPE  
**C1-F**  
891 sq.ft.  
**2B**

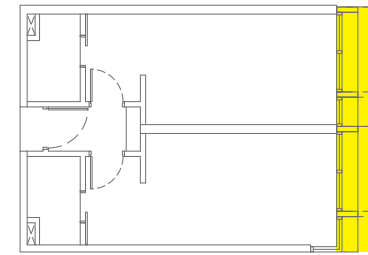


TYPE  
**C1-G**  
921 sq.ft.  
**2B**



\* Highlighted area indicates the build-up difference of respective unit type

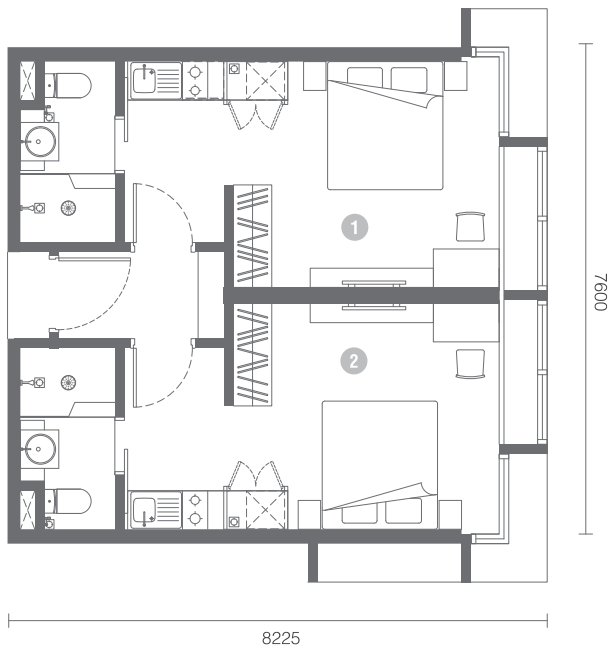
TYPE  
**D1-C**  
648 sq.ft.  
**DUAL KEY 2B**



\* Highlighted area indicates the build-up difference of respective unit type

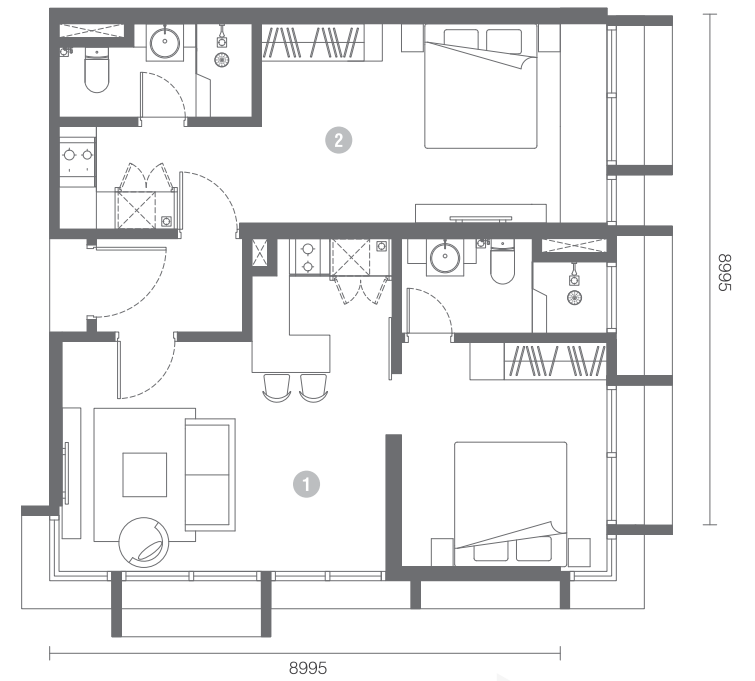
TYPE  
**D1-A**  
651 sq.ft.  
**DUAL KEY 2B**

- 1. SUITE 1
- 2. SUITE 2

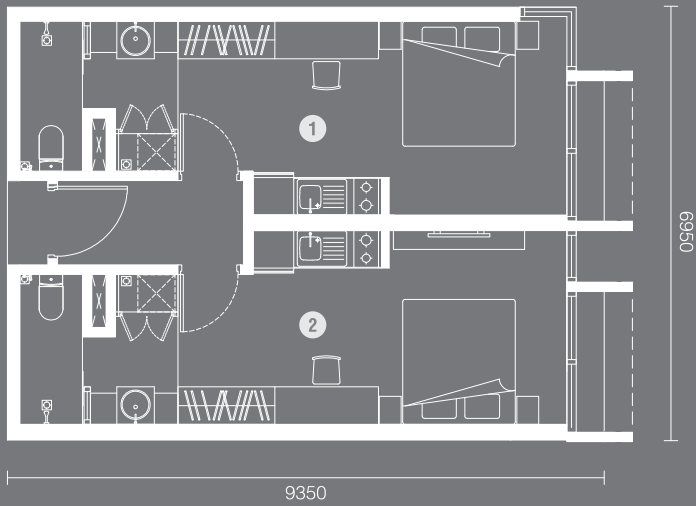


TYPE  
**D2**  
866 sq.ft.  
**DUAL KEY 2B**

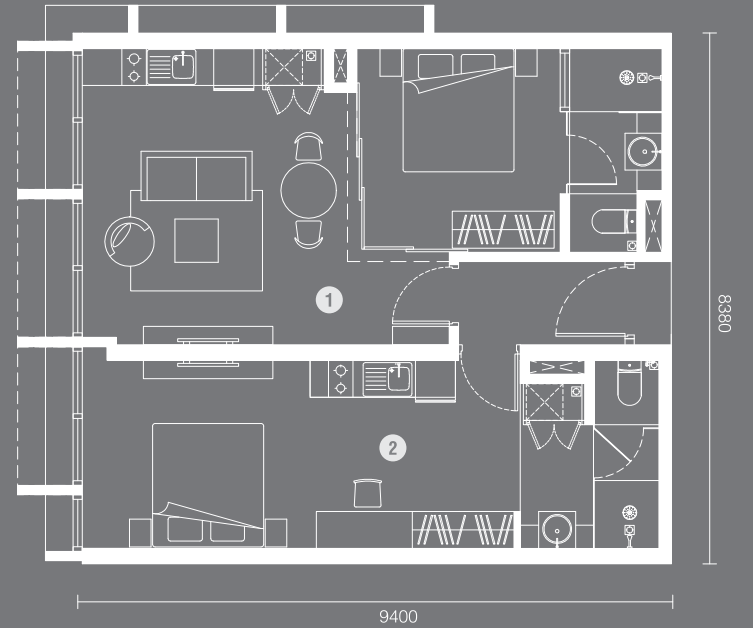
- 1. SUITE 1
- 2. SUITE 2



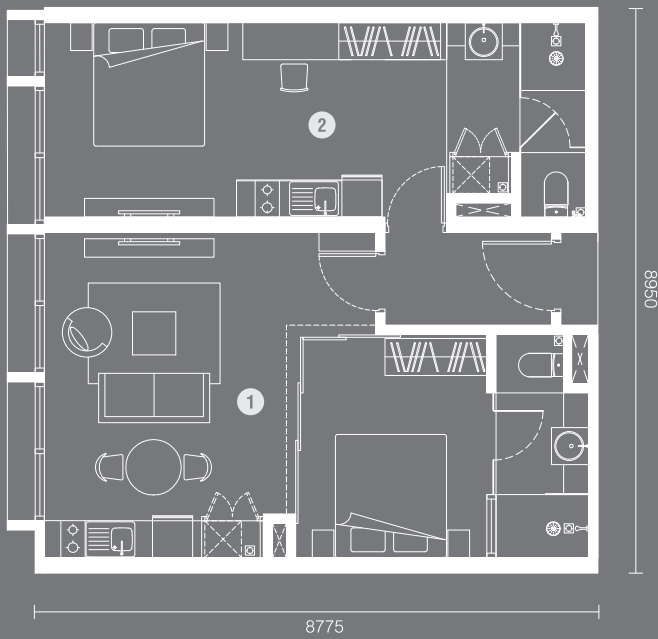
TYPE  
**D3**  
643 sq.ft.  
DUAL KEY 2B



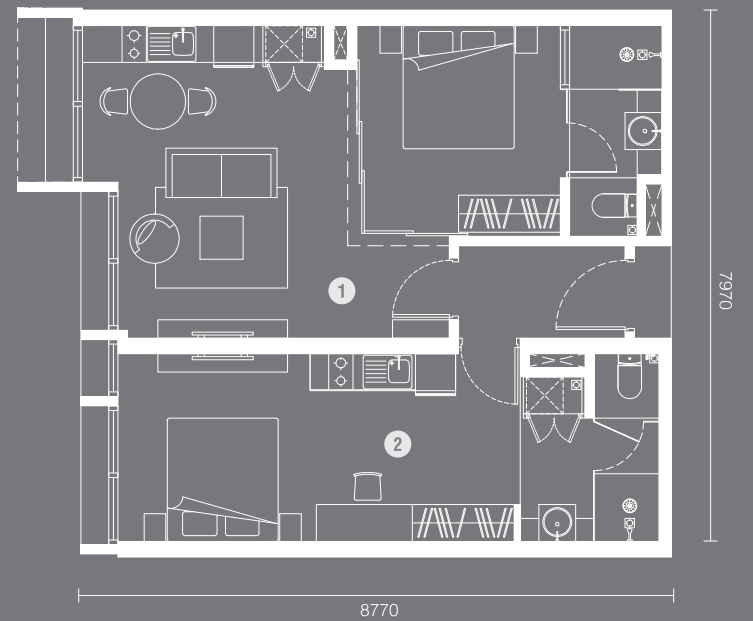
TYPE  
**D4-C**  
861 sq.ft.  
DUAL KEY 2B



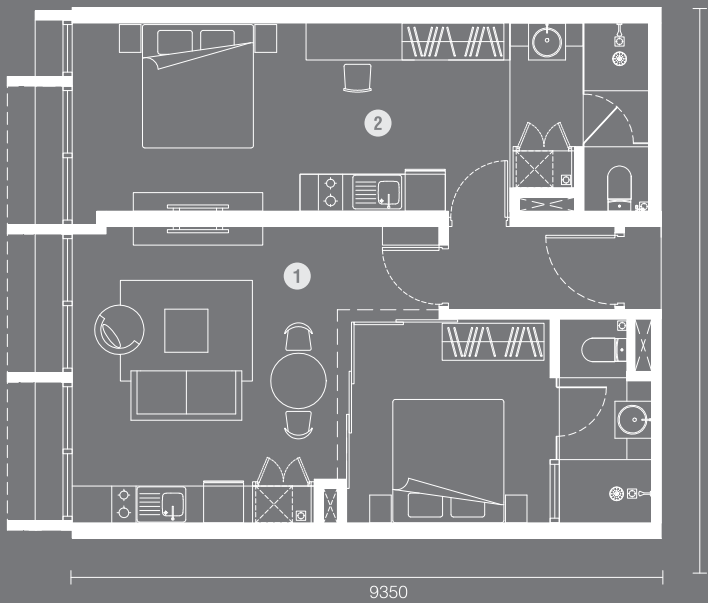
TYPE  
**D4-A**  
864 sq.ft.  
DUAL KEY 2B



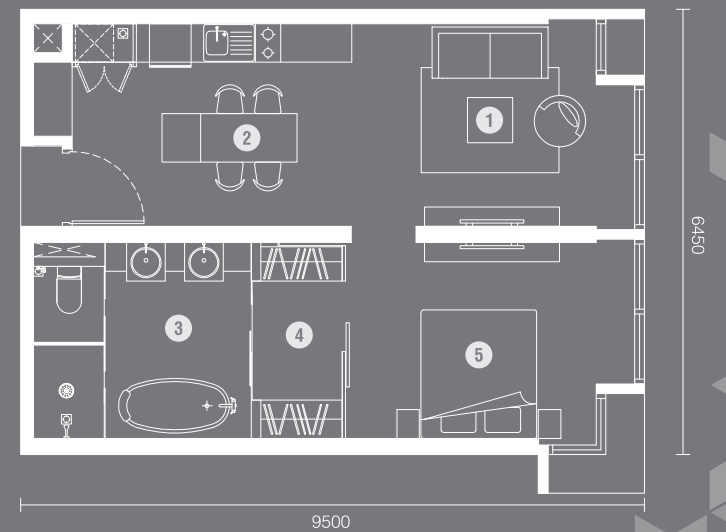
TYPE  
**D4-D**  
846 sq.ft.  
DUAL KEY 2B



TYPE  
**D4-B**  
861 sq.ft.  
DUAL KEY 2B



TYPE  
**E1**  
674 sq.ft.  
1B



# LOCATION MAP



EXPRESS TO IMPRESS  
[www.expressionz.com.my](http://www.expressionz.com.my)

Developer :



## ONE ONE EIGHT

**HOUSING DEVELOPMENT** SDN BHD (982280-W)  
(a member of Exsim Group of Companies)

📍 No. 18 & 18-1,  
Block 2, Jalil Link,  
Jalan Jalil Jaya 2,  
Bukit Jalil,  
57000 Kuala Lumpur.

☎ +603-8993 9911

📠 +603-8993 9922

✉ info@exsim.com.my

## SALES GALLERY

📍 No. 25,  
Jalan Yap Kwan Seng,  
50450 Kuala Lumpur.  
(3.162769, 101.714526)

☎ +603-2181 8911

📠 +603-2181 7911

**expressionz.com.my**

Developer's Licence No. : 13415-1/03-2016/0241(L) • Validity Period : 14/03/2014 - 13/03/2016 • Advertising Permit No. : 13415-1/03-2016/0241(P) • Validity Period : 14/03/2014 - 13/03/2016 • Approving Authority : Dewan Bandaraya Kuala Lumpur • Building Plan Approval : BP U3 OSC 2013.2343 • Land Tenure : Leasehold, Ending on March 4, 2079 • Interest Restrictions - This land can not be transferred or leased without the approval of Committee of Federal Territory of Kuala Lumpur • Land Encumbrances : Charged to Ambank (M) Berhad till 18/11/2019 • Expected Completion Date : Q2 2018 • Type of Development : Serviced Apartment • Development Name : Menara Inspirasi / Expressionz Professional Suites • Total No. of Units : 447 • Min Selling Price : RM894,770.00 • Max Selling Price : RM4,800,000.00 • Bumi Discount : 7%

All information contained herein is subject to changes as may be required by the relevant authorities without any notification and shall not be binding or be deemed to form a contract or any part thereof. Whilst every care has been taken in providing this information, we, One One Eight Housing Development Sdn Bhd shall not be held liable for any claim whatsoever arising from the use and/or reliance on the above information. All illustrations and pictures are artist impressions only, no representation or warranty is made as to the accuracy or completeness of the same. The item are subject to variation, modifications and substitutions as may be recommended by the relevant authorities or consultants.