



THE
MEWS

KUALA LUMPUR
CITY CENTRE

A HARMONIOUS
PARTNERSHIP

The Mews serviced residence is a merging of cultures between Eastern & Oriental Berhad – Malaysia's premier lifestyle property developer and Mitsui Fudosan Residential – Japan's largest developer.

DOUBLE VISION

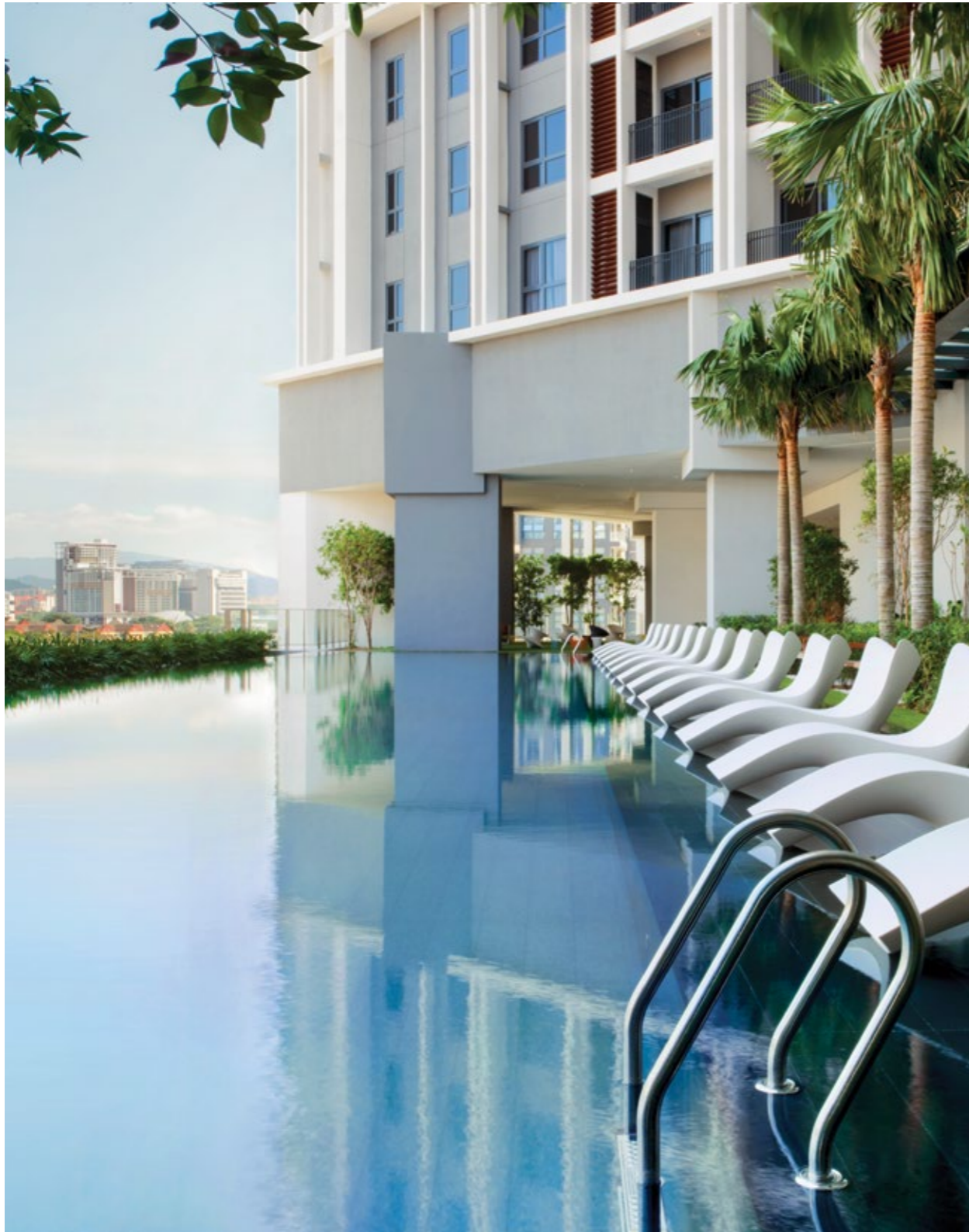
Distinctively sculptural in appearance, The Mews comprises 256 custom-designed units distributed evenly over 38-storey twin towers. Provocative double 'V' shapes top each tower. A glistening new landmark in downtown Kuala Lumpur.



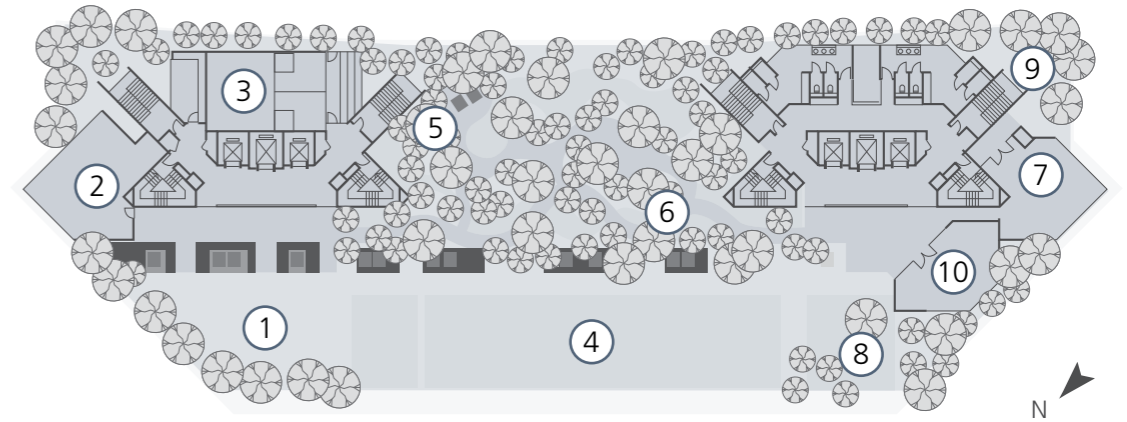


PRIME LOCATION

One of South East Asia's most exciting cities, Kuala Lumpur doesn't disappoint when it comes to local attractions. Located on Jalan Yap Kwan Seng, just a short walk away from KLCC Twin Towers, The Mews affords residents ample privacy and a restful residential setting. It remains within easy reach of important landmarks, public transport systems, embassies, medical centres, international schools, great shopping and exciting nightlife, ensuring that all your daily needs are met regardless of your lifestyle.



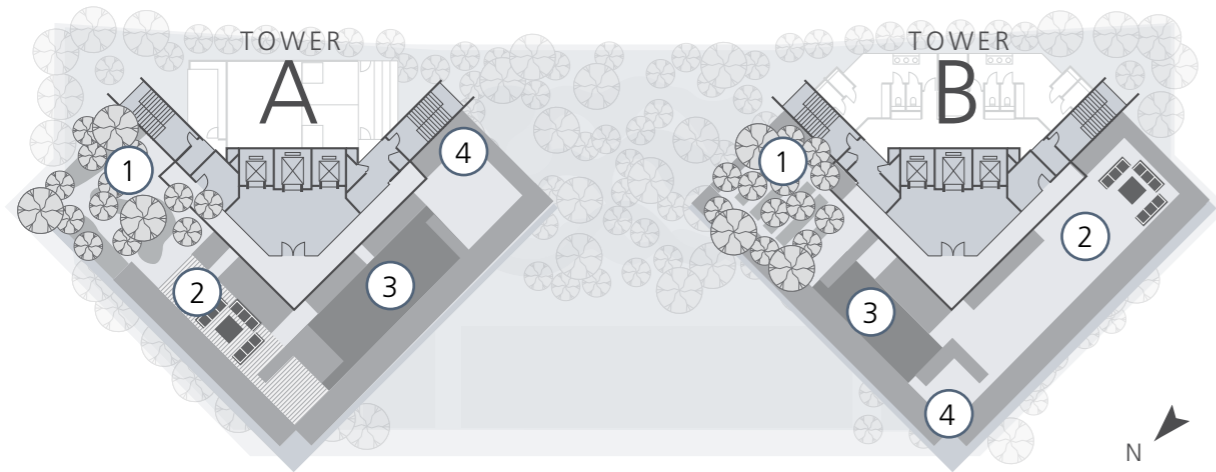
FACILITIES PLAN



WATER SANCTUARY • 6TH FLOOR

- 1 Poolside Lawn
- 2 Gym
- 3 Squash Court
- 4 Swimming Pool
- 5 Spa Pool
- 6 Pond
- 7 Resident's Lounge
- 8 Children's Pool
- 9 Children's Playground
- 10 Function Room

ROOF GARDEN

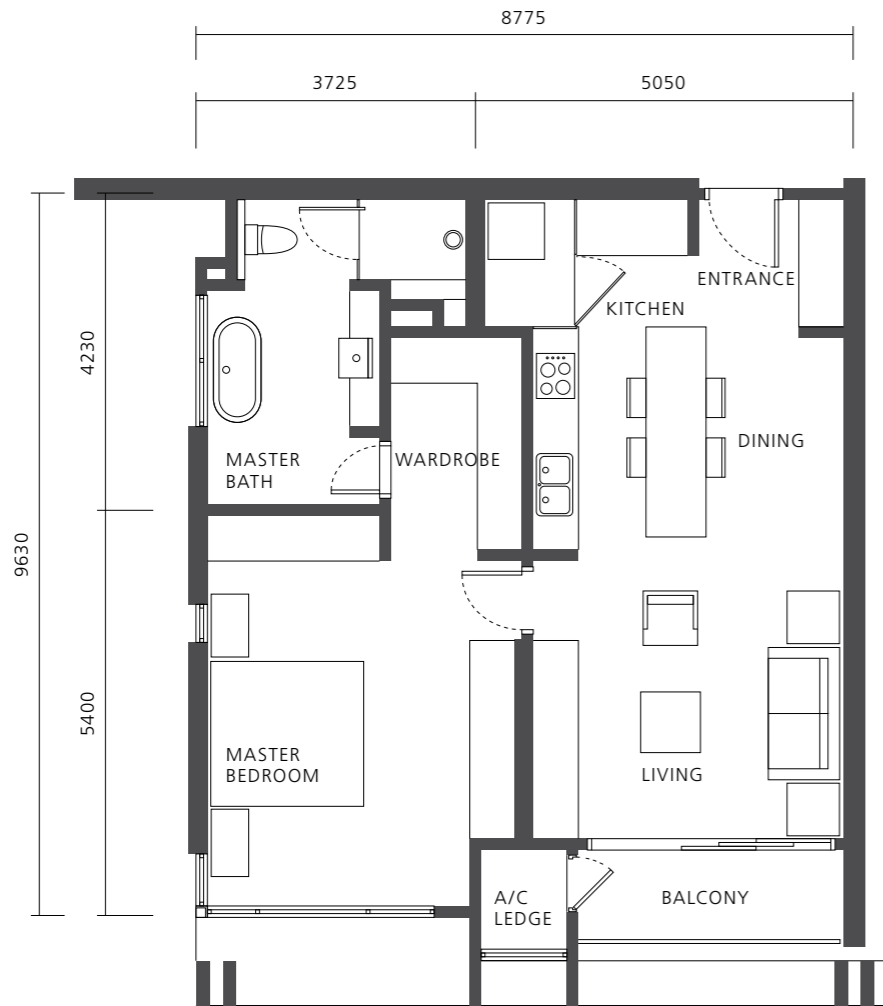


ROOF GARDEN • 37TH FLOOR

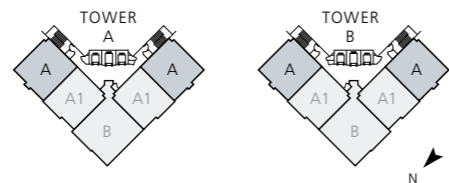
- 1 Herb Garden
- 2 Function Space
- 3 Open Lawn
- 4 Private Garden



ONE BEDROOM SUITE



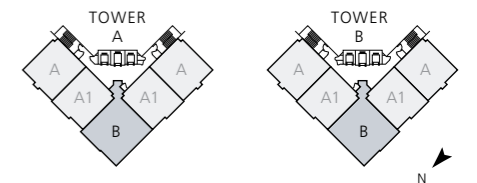
Type A
One Bedroom & One Bathroom
Built-Up — 925 sqft / 86 sqm



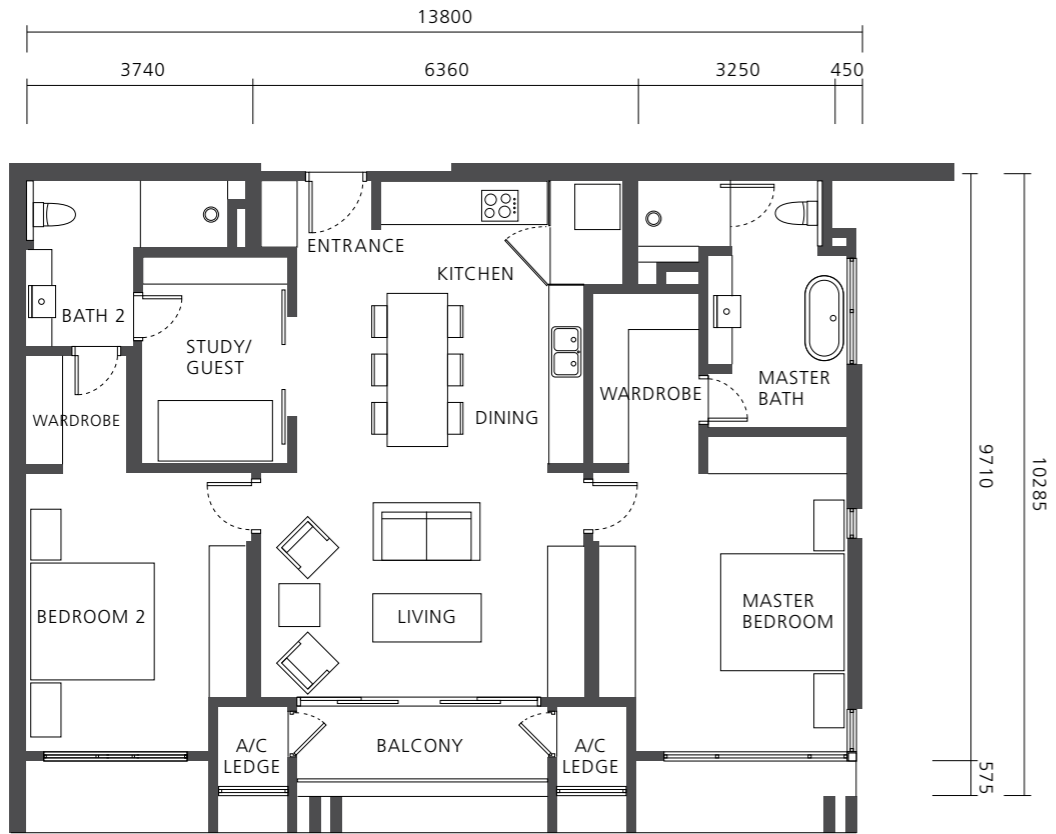
TWO BEDROOM SUITE



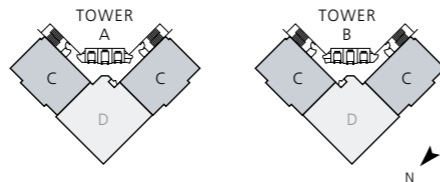
Type B
Two Bedrooms & Two Bathrooms
Built-Up — 1,270 sqft / 118 sqm



TWO + ONE BEDROOM SUITE



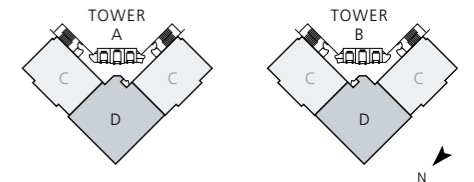
Type C
Two + One Bedrooms & Two Bathrooms
Built-Up — 1,463 sqft / 136 sqm



THREE BEDROOM SUITE



Type D
Three + One Bedrooms
& Three + One Bathrooms
Built-Up — 2,066 sqft / 192 sqm



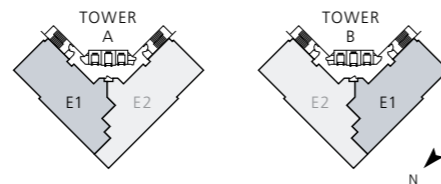
PENTHOUSE SUITE



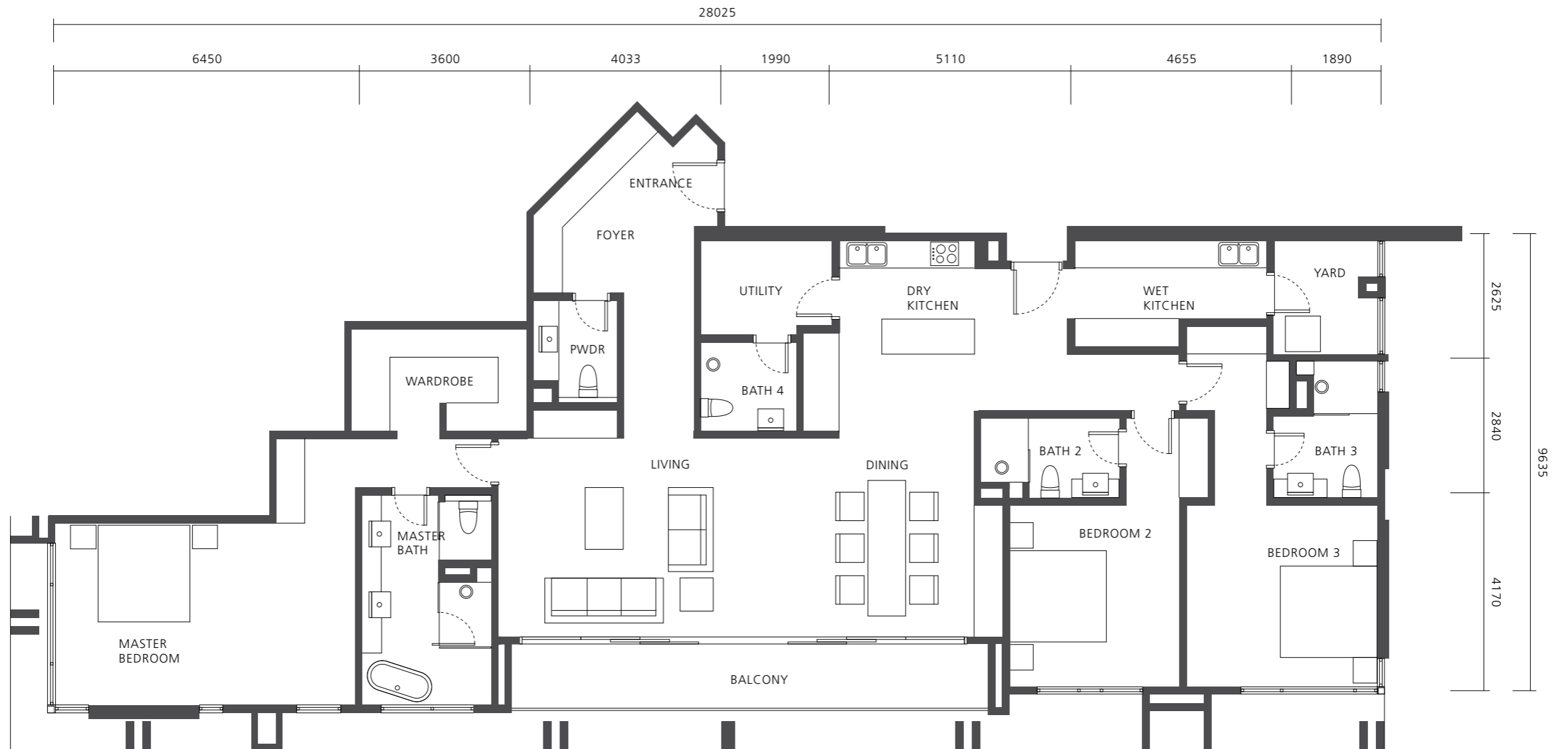
Type E1

Three + One Bedrooms
& Four + One Bathrooms

Built-Up — 2,421 sqft / 225 sqm



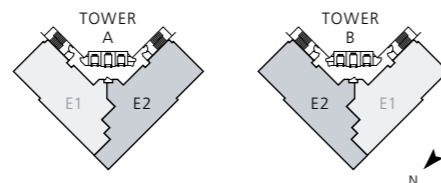
PENTHOUSE SUITE



Type E2

Three + One Bedrooms
& Four + One Bathrooms

Built-Up — 2,615 sqft / 243 sqm





SPECIFICATIONS

STRUCTURE

Reinforced Concrete

WALL

Brick / Concrete

CEILING

Fibrous Plaster / Skim Coat & Paint

WINDOWS

Aluminium Frame

DOORS

Main Door

Others

Ironmongery

Fire Door

Timber Semi Core Doors / Aluminium Doors

Quality Locksets

FLOOR FINISHES

Living, Dining, Kitchen & Master Bedroom

Master Bath

Balcony

Others

Timber Flooring

Stone

Tiles

Cement Render

WALL FINISHES

Master Bath

Others

Stone / Plaster & Paint

Plaster & Paint

SANITARY INSTALLATION & FITTINGS

Master Bath

Long Bath, Water Closet & Wash Basin with Fittings & Accessories

OTHERS

Air-Conditioning Units

Kitchen Cabinet with Appliances

(Fridge, Electric Oven, Microwave Oven, Hob & Hood, Washer Dryer and Waste Disposal)

Light Fittings

Ceiling Fan

Wardrobe to Master Bedroom

Shoe Cabinet



EASTERN & ORIENTAL BHD (555-K)

KUALA LUMPUR

The Mews
19 Jalan Yap Kwan Seng
50450 Kuala Lumpur Malaysia
Sales Hotline +6017 266 1188
E enquiry@the-mews.com

Head Office
Level 3A (Annexe), Menara Milenium
8 Jalan Damanlela, Damansara Heights
50490 Kuala Lumpur, Malaysia
T +603 2093 8888 **F** +603 2095 0293

PENANG

Seri Tanjung Pinang, Tanjung Tokong
10470 Pulau Pinang, Malaysia
T +604 890 9999 **F** +604 899 1122

JOHOR

1 Jalan Medini Timur 15
Bandar Medini Iskandar
79250 Iskandar Puteri
Johor Darul Takzim, Malaysia
T +607 509 6868 **F** +607 509 7878

LONDON

13th Floor, Landmark House
Hammersmith Bridge Road, Hammersmith
London W6 9DP, United Kingdom
T +44 (0)203 837 0000

www.easternandoriental.com

Weibo



WeChat



E&O Living



The Mews, KLCC

AN INTERNATIONAL COLLABORATION BETWEEN



