



Tan & Tan Property Showcase  
Suite 5.02, Level 5, The Gardens South Tower, Mid Valley City,  
Lingkaran Syed Putra, 59200 Kuala Lumpur, Malaysia.  
Tel : 603 2283 2266 Fax : 603 2287 8868  
[www.tantan.com](http://www.tantan.com)

Developed by  
**Hampshire Properties Sdn Bhd** (212431-M)  
A joint venture between Tan & Tan Developments Berhad  
& J.A. Russell & Co Sdn Bhd



# PENTHOUSE UNIT

**HampshirePlace**  
LUXURY RESIDENCES

MUCH HAS BEEN SAID ABOUT HAMPSHIRE PLACE. FROM ITS CULTURED NAME TO ITS CONTEMPLATIVE LANDSCAPING, EVERYTHING ABOUT HAMPSHIRE PLACE BREATHES ELEGANCE, BALANCE AND BEAUTY.



# STATELY STYLIZED STIMULATING

**Hampshire Place** offers an international feel, one that has been designed to be one with the influential locale it locates - the intersection of Persiaran Hampshire and Jalan Tun Razak. At the start of creation, Hampshire Place was envisioned to accommodate the city's best as well as quiet the hustle the minute the weary homeowner returned home.

That best explains the appeal at Hampshire Place. Just as it offers the city readily, the development has been composed to be relaxed and calming. What is home if it cannot soothe the ruffled soul? Hampshire Place takes this seriously, perhaps more so, as it fronts some of the top corporations in town. The result is a square of tranquility, one that sits in harmony with the rest of its city companions, but lulls its homeowners with comfort and quietude.

The inner courtyard holds court to a lovely rock garden that begins the descend to winding down. A large part of the recreational level is water-filled, creating a sort of eden for its residents. The private inner-sanctum of lush greenery calls for residents to rest in reflection by dreamy day beds on the pool or roll out their meditation mats by the abounding foliage.





Hampshire Place comprises two tall towers - one for residences and the other for offices. International travellers who wish to set up home in Malaysia will enjoy its dynamic city centre surroundings and more so, its newly opened Hampshire Place Office. A 28-storey corporate tower, it will play host to corporations, offices and retail boutiques and offer an upscale address. Hampshire Place will be ideal for international travellers who require elegant office spaces and accommodation in one strategic location.

Together, these two impressive towers join the line-up of other tall buildings forming the KL skyline. Strikingly 21st century, the Hampshire Place carries a downtown New York city corporation look with its clean lines and square roof. A green reflective hue throughout the facade gives it a fashionable opulence that set it apart from many.

Families who covet space and enjoy condo living will find their needs properly met at Hampshire Place.



SITE PLAN

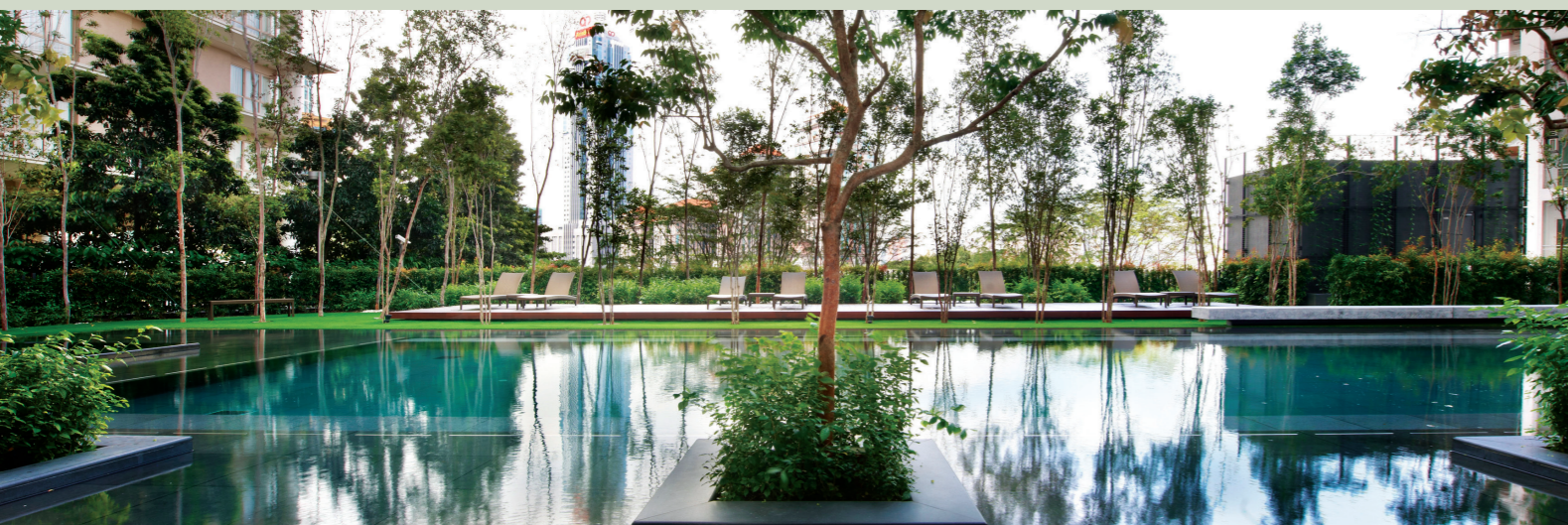
LOCATION MAP

FLOOR PLANS

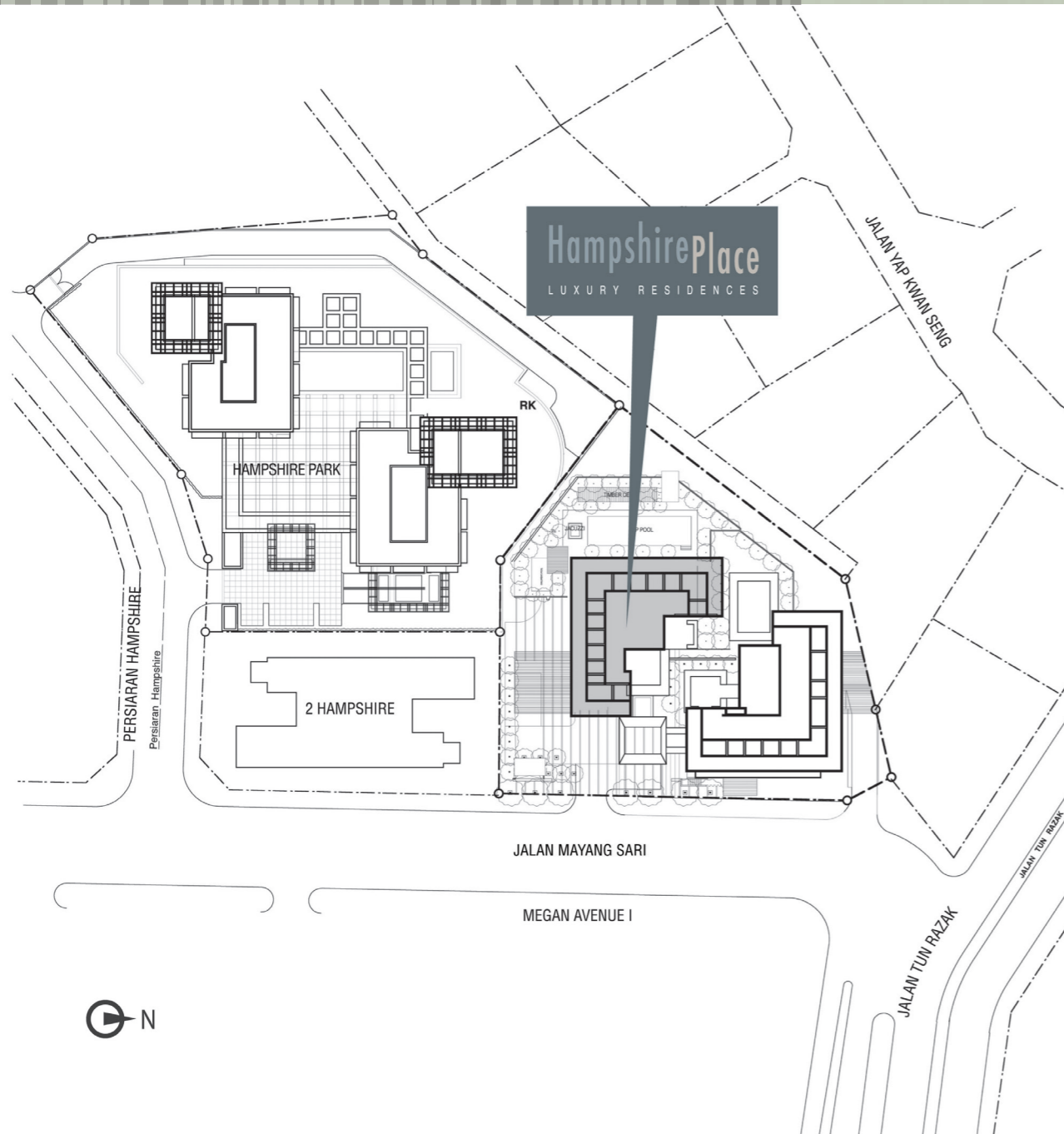
Type F Type G Type H

SPECIFICATIONS

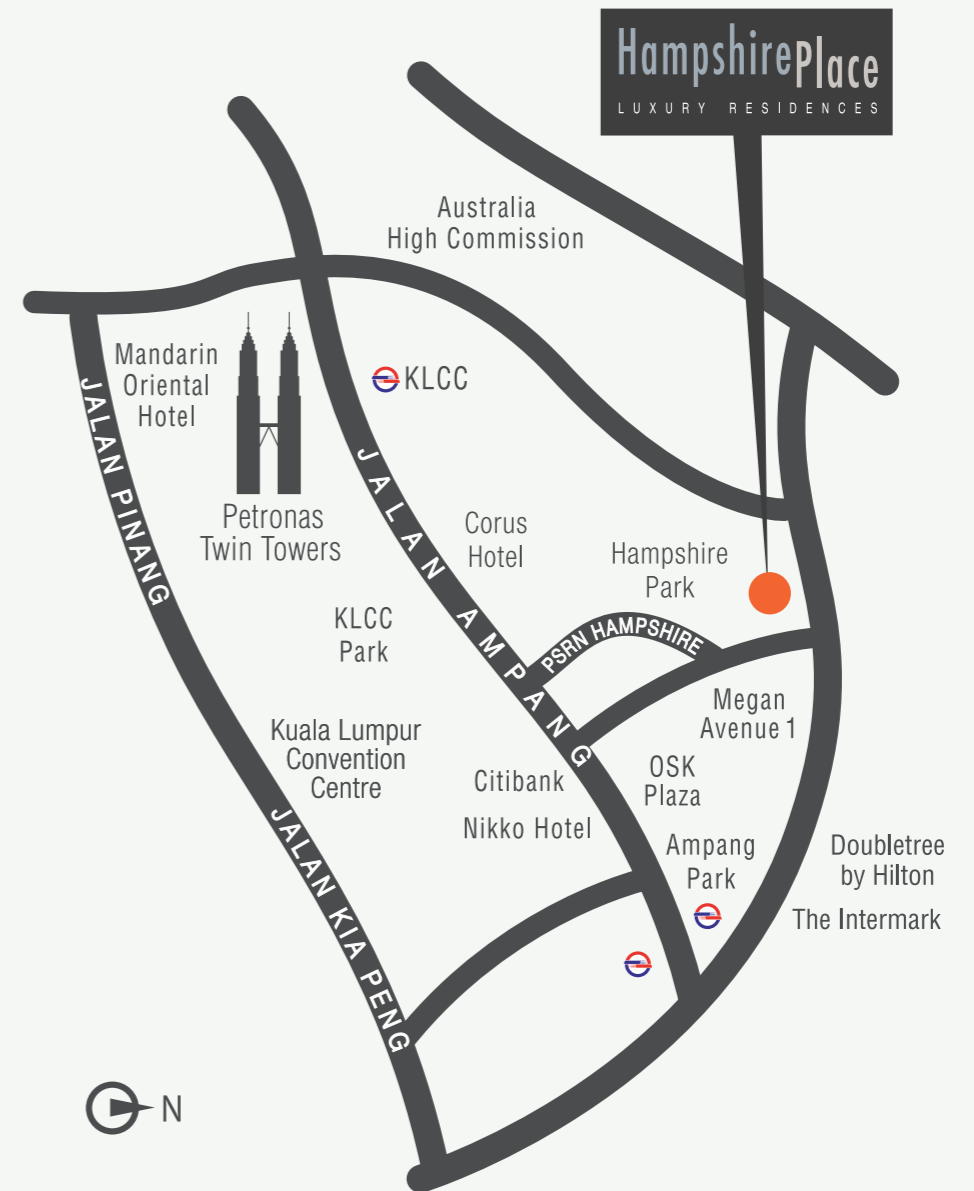
Type F Type G Type H



# SITE PLAN



# LOCATION MAP



# TYPE F



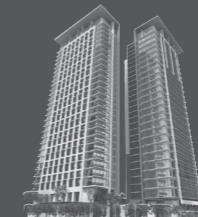
3 BEDROOMS

LEVEL 28 & 29

BUILT-UP AREA  
244m<sup>2</sup> [ 2,626 sf ]



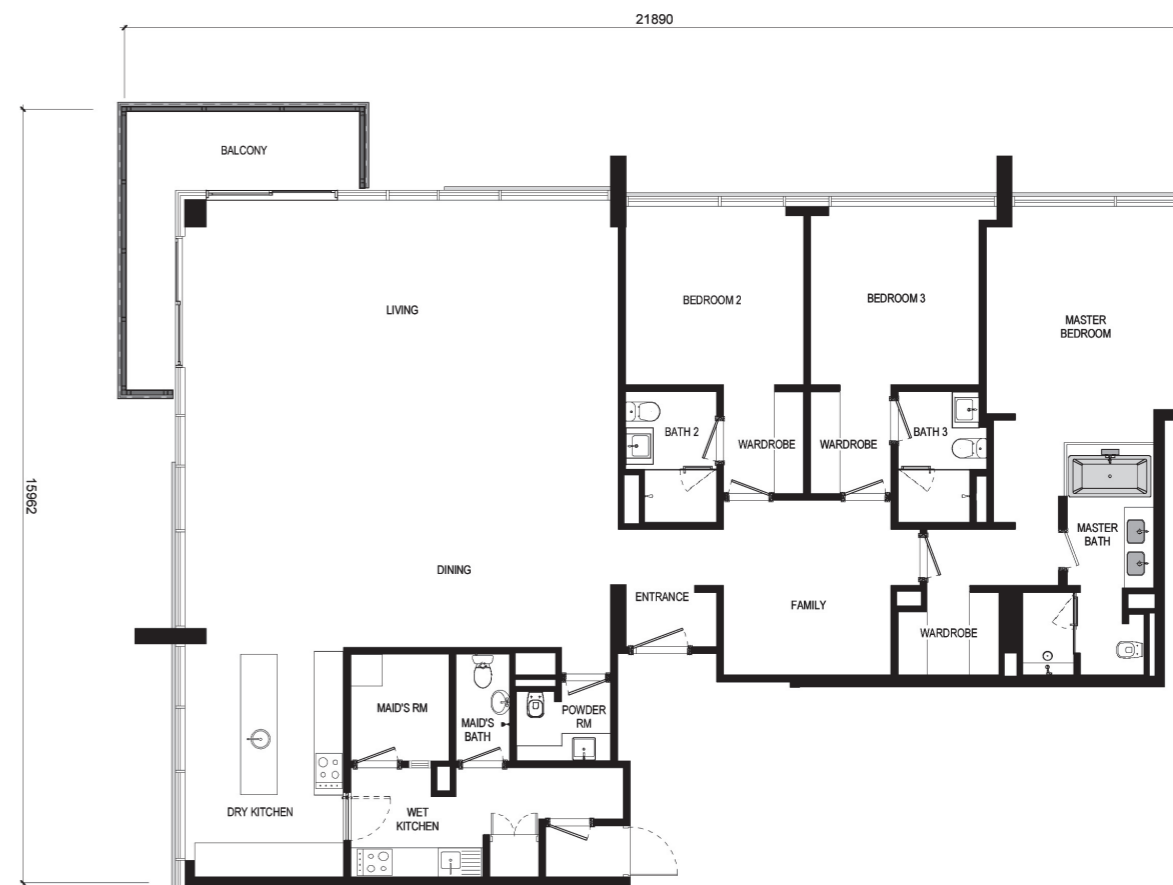
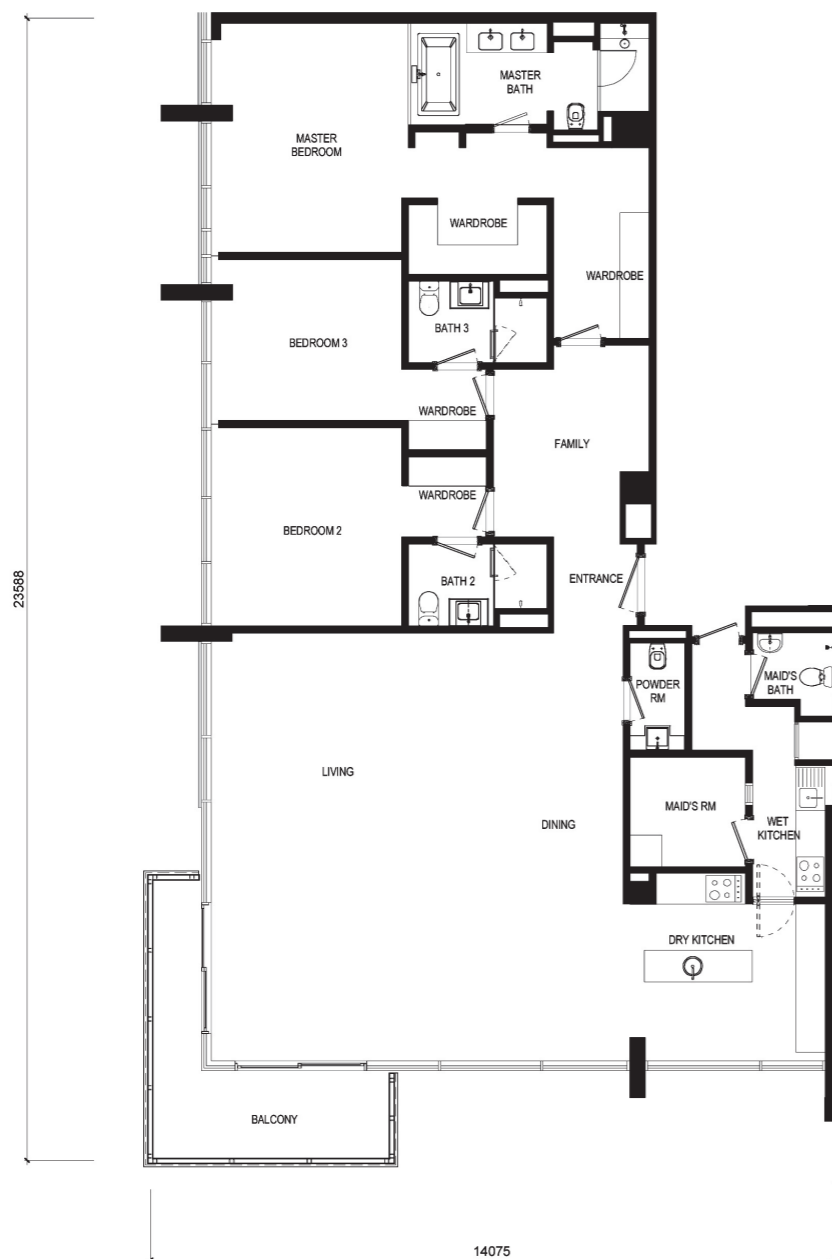
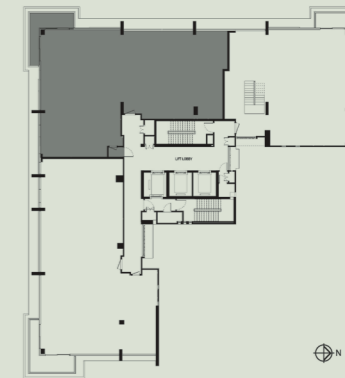
# TYPE G



3 BEDROOMS

LEVEL 28 & 29

BUILT-UP AREA  
253m<sup>2</sup> [ 2,723 sf ]



# TYPE H



3 BEDROOMS + STUDY

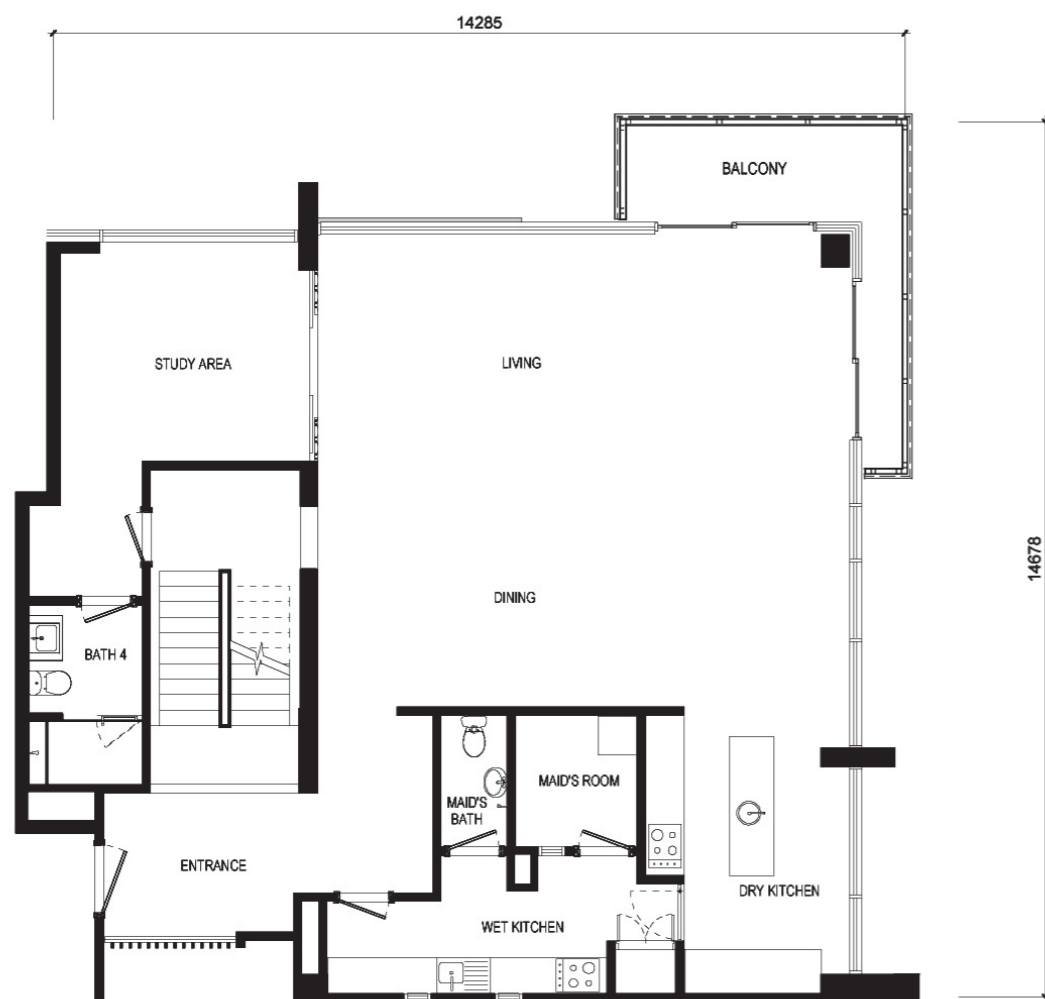
LEVEL 28 [ LOWER FLOOR ]

LEVEL 29 [ UPPER FLOOR ]

TOTAL BUILT-UP AREA  
362m<sup>2</sup> [ 3,896 sf ]

BUILT-UP AREA  
181m<sup>2</sup> [ 1,948 sf ]

BUILT-UP AREA  
181m<sup>2</sup> [ 1,948 sf ]



Lower Floor



Upper Floor

# SPECIFICATIONS

## TYPE F

Structure		reinforced concrete
Wall		common clay brick/ calcium silicate brick/ reinforced concrete
Roof		reinforced concrete roof slab
Ceiling		fibrous plaster board/ skim coat
Windows		powder coated aluminium frame glass panels
Door	Main entrance & back entrance Others	timber door flush timber door powder coated aluminium frame sliding door (where applicable)
Locks		quality locksets
Flooring	Entrance foyer, living, dining, dry kitchen, family, master bathroom, bathroom 2 & 3, powder room Master bedroom, bedroom 2 & 3 Wet kitchen, maid's room, maid's bath, balcony	marble  timber strip homogeneous tiles
Wall finishes	General Master bathroom, bathroom 2 & 3, powder room Dry kitchen & wet kitchen	plaster and emulsion paint marble  polished porcelain tiles/ plaster and emulsion paint
Sanitaryware & fittings	Master bathroom  Bathroom 2 & 3, maid's bath  Powder room	white sanitaryware with accessories comprising long bath, water closet, wash basin, shower white sanitaryware with accessories comprising water closet, wash basin, shower white sanitaryware with accessories comprising water closet, wash basin
Electrical installation	13 Amp.power point Shaver point 20 Amp.oven switch Telephone point TV/SMATV socket outlet Lighting point Door bell point Audio intercom 3 PH distribution box Ceiling fan point Air conditioning system  Hot water system	43 nos 1 no 1 no 5 nos 5 nos 52 nos 1 no 1 no 1 no 5 nos air conditioning units is provided at living, dining, family, dry kitchen, master bedroom, bedroom 2 and 3, maid's room hot water system is provided at all bathrooms except maid's bathroom and powder room
Gas piping		NGV or LPG system
Built-in furniture	Bedroom Dry kitchen Wet kitchen	wardrobe kitchen cabinet with counter top kitchen cabinet with counter top, washing machine housing
Appliances	Dry kitchen Wet kitchen	kitchen hood, kitchen hob, oven kitchen hood, kitchen hob

# SPECIFICATIONS

## TYPE G

Structure		reinforced concrete
Wall		common clay brick/ calcium silicate brick/ reinforced concrete
Roof		reinforced concrete roof slab
Ceiling		fibrous plaster board/ skim coat
Windows		powder coated aluminium frame glass panels
Door	Main entrance Back entrance Others	timber door timber door/ metal grille door flush timber door powder coated aluminium frame sliding door (where applicable)
Locks		quality locksets
Flooring	Entrance foyer, living, dining, dry kitchen, family, master bathroom, bathroom 2 & 3, powder room Master bedroom, bedroom 2 & 3 Wet kitchen, maid's room, maid's bath, balcony	marble  timber strip homogeneous tiles
Wall finishes	General Master bathroom, bathroom 2 & 3, powder room Dry kitchen & wet kitchen	plaster and emulsion paint marble  polished porcelain tiles / plaster and emulsion paint
Sanitaryware & fittings	Master bathroom  Bathroom 2 & 3, maid's bath  Powder room	white sanitaryware with accessories comprising long bath, water closet, wash basin, shower white sanitaryware with accessories comprising water closet, wash basin, shower white sanitaryware with accessories comprising water closet, wash basin
Electrical installation	13 Amp.power point Shaver point 20 Amp.oven switch Telephone point TV/SMATV socket outlet Lighting point Door bell point Audio intercom 3 PH distribution box Ceiling fan point Air conditioning system  Hot water system	43 nos 1 no 1 no 5 nos 5 nos 52 nos 1 no 1 no 1 no 5 nos air conditioning units is provided at living, dining, family, dry kitchen, master bedroom, bedroom 2 and 3, maid's room hot water system is provided at all bathrooms except maid's bathroom and powder room
Gas piping		NGV or LPG system
Built-in furniture	Bedroom Dry Kitchen Wet kitchen	wardrobe kitchen cabinet with counter top kitchen cabinet with counter top, washing machine housing
Appliances	Dry kitchen Wet kitchen	kitchen hood, kitchen hob, oven kitchen hood, kitchen hob

# SPECIFICATIONS

## TYPE H

Structure		reinforced concrete
Wall		common clay brick/ calcium silicate brick/ reinforced concrete
Roof		reinforced concrete roof slab
Ceiling		fibrous plaster board/ skim coat
Windows		powder coated aluminium frame glass panels
Door	Main entrance Study Others	timber door sliding timber flush doors flush timber door powder coated aluminium frame sliding door (where applicable)
Locks		quality locksets
Flooring	Entrance foyer, living, dining, dry kitchen, family, study, master bathroom, bathroom 2, 3 & 4, powder room Master bedroom, bedroom 2 & 3 Wet kitchen, maid's room, maid's bath, balcony	marble  timber strip homogeneous tiles
Wall finishes	General Master bathroom, bathroom 2, 3 & 4, powder room Dry kitchen & wet kitchen	plaster and emulsion paint marble  polished porcelain tiles/ plaster and emulsion paint
Sanitaryware & fittings	Master bathroom  Bathroom 2, 3 & 4, maid's bath  Powder room	white sanitaryware with accessories comprising long bath, water closet, wash basin, shower  white sanitaryware with accessories comprising water closet, wash basin, shower  white sanitaryware with accessories comprising water closet, wash basin
Electrical installation	13 Amp.power point Shaver point 20 Amp.oven switch Telephone point TV/SMATV socket outle Lighting point Door bell point Audio intercom 3 PH distribution box Ceiling fan point Air conditioning system  Hot water system	63 nos 1 no 1 no 6 nos 6 nos 71 nos 2 nos 1 no 2 nos 8 nos air conditioning units is provided at living, dining, family, dry kitchen, master bedroom, bedroom 2 and 3, maid's room hot water system is provided at all bathrooms except maid's bathroom and powder room
Gas piping		NGV or LPG system
Built-in furniture	Bedroom Dry kitchen Wet kitchen	wardrobe kitchen cabinet with counter top kitchen cabinet with counter top, washing machine housing
Appliances	Dry kitchen Wet kitchen	kitchen hood, kitchen hob, oven kitchen hood, kitchen hob